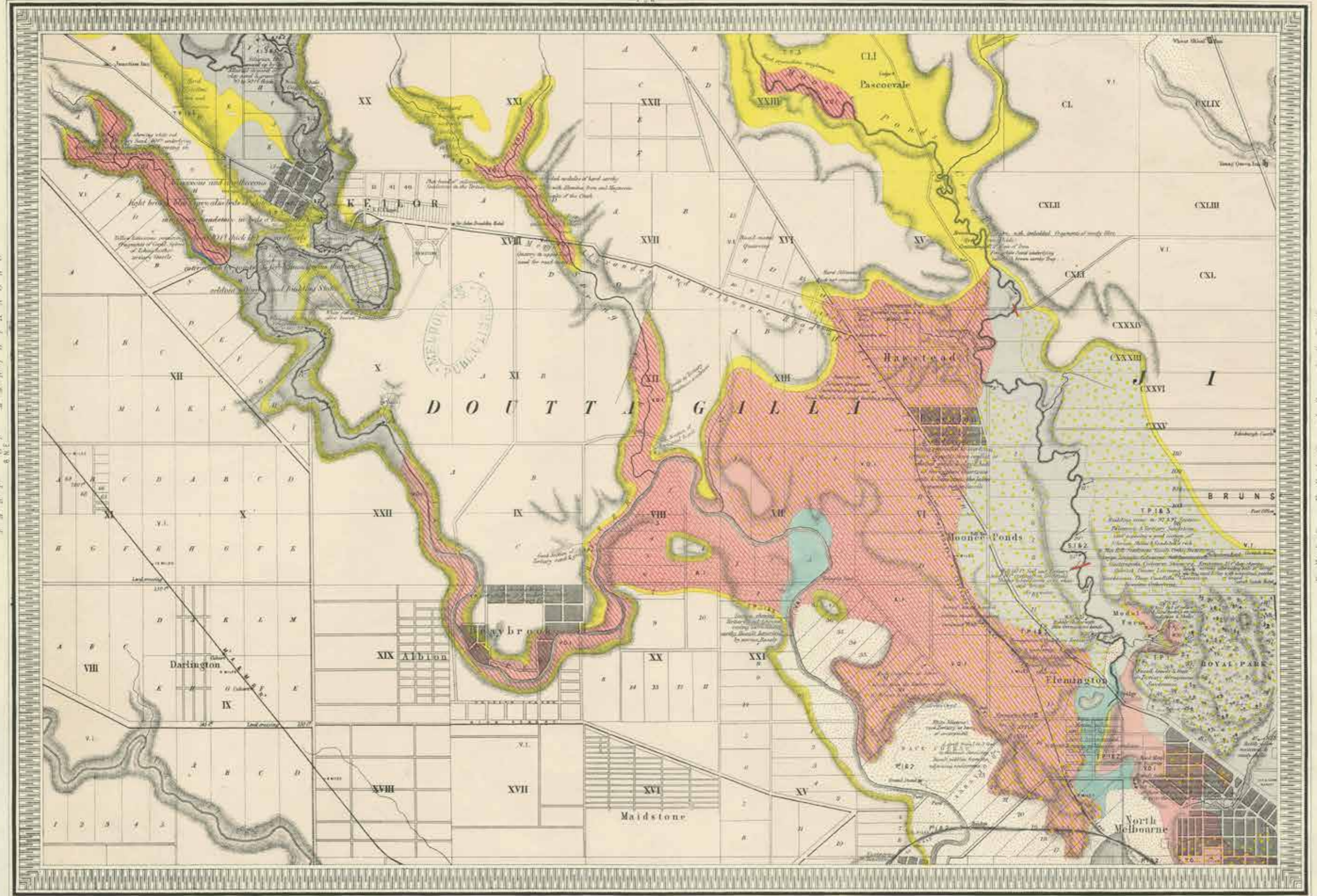


GEOLOGICAL SURVEY OF VICTORIA.

S.W. Melbourne

Nº 1.



Scale 1:50,000

Legend:

Blue	Water	Green	Gravelly sandstone	Yellow	Soft sandstone	Orange	Hard sandstone	Red	Granite	Black	Coal	Grey	Clay	White	Unconsolidated
Blue wavy lines	Water	Green wavy lines	Gravelly sandstone	Yellow wavy lines	Soft sandstone	Orange wavy lines	Hard sandstone	Red wavy lines	Granite	Black wavy lines	Coal	Grey wavy lines	Clay	White wavy lines	Unconsolidated

Notes:

1. The geological map is based on the geological survey of Victoria, Australia, and is intended to show the distribution of the various geological formations in the district.

2. The map is based on the geological survey of Victoria, Australia, and is intended to show the distribution of the various geological formations in the district.

3. The map is based on the geological survey of Victoria, Australia, and is intended to show the distribution of the various geological formations in the district.