

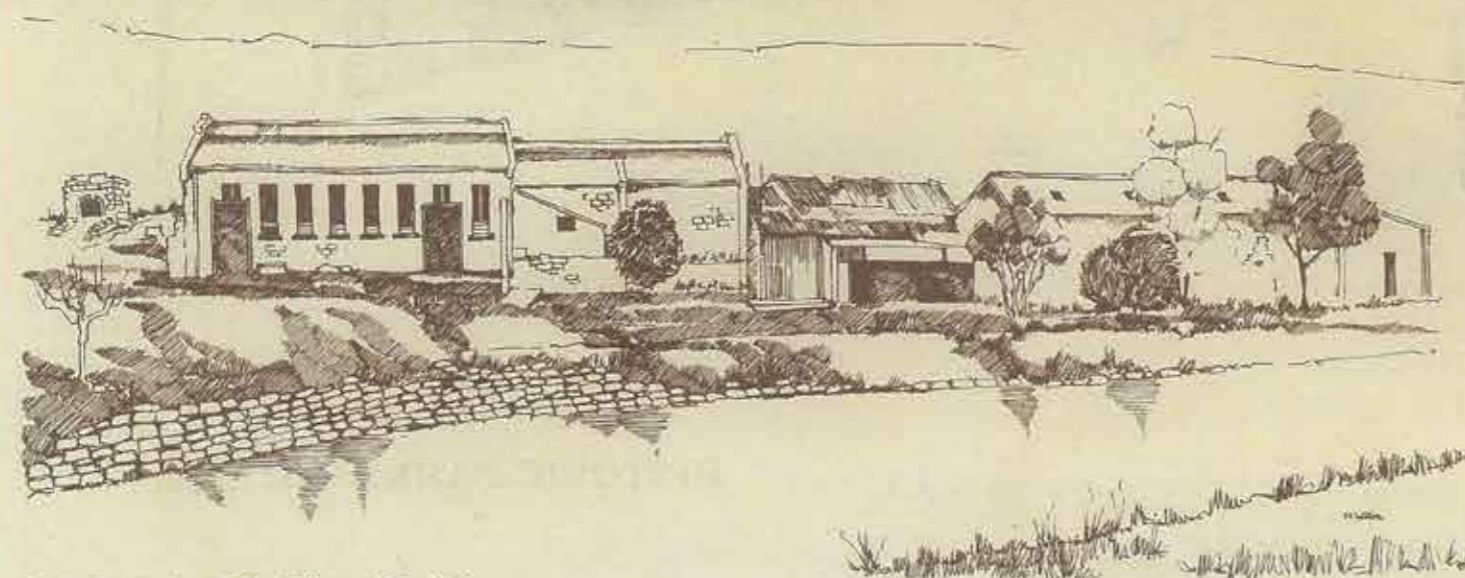
Circa 1880: Melbourne Meat Preserving Company Works
(Courtesy, Mrs Ravenhall)

The History

The first industry established on the site was Raleigh's boiling down works which operated from 1843 to 1866. These works were a result of the significant pastoral industry developing in Victoria at that time.

The Melbourne Meat Preserving Company started operations on this site in 1868 and was the leading meat canning factory in Australia during the 1870's and for a brief time was the leading meat cannery in the world. This company folded in 1888. In 1911 the Humes Bro's Cement Iron Co moved to the site. Humes were world pioneers in the development and production of centrifugally reinforced concrete pipe.

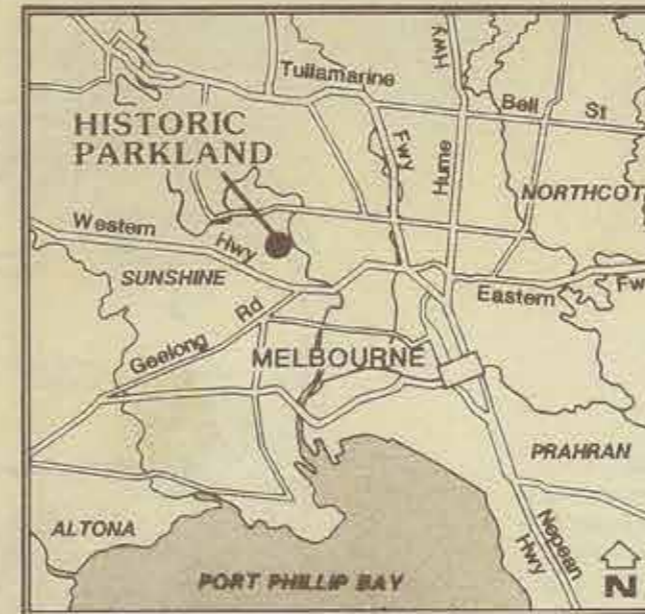
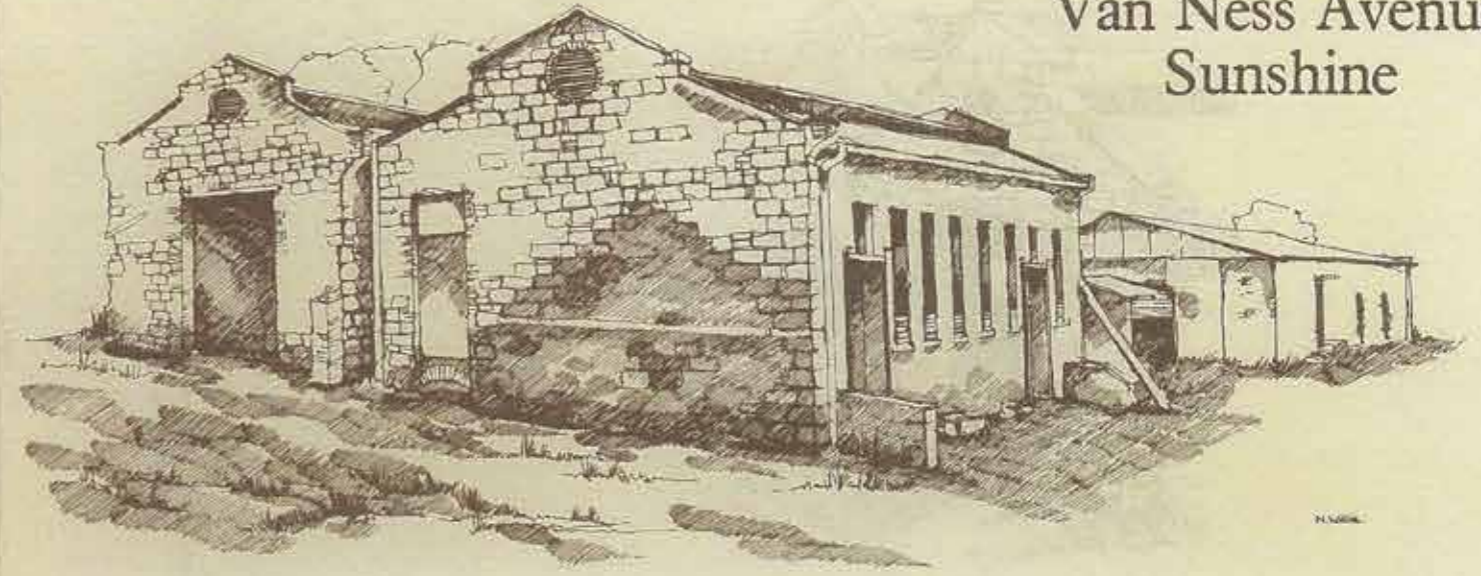
Humes left the site in 1979 ending 130 years of industrial activity which contributed to the development of Melbourne. This history is to be preserved at this site so that future generations will have a better understanding of Australia's early industrial development.



1987: Remains of the Historic Buildings

HISTORIC PARKLAND

Van Ness Avenue
Sunshine



For further information on this project contact Bill Johnsen of the Waterways and Parks Division of the Melbourne and Metropolitan Board of Works
601 Little Collins Street, Melbourne 3000.
Phone 615 5946



Project Management by the Melbourne and Metropolitan Board of Works

An Urban Waterways Project Funded by the Commonwealth/State Bicentennial Program



Community Involvement

A Committee has been formed after a public meeting to assist the Board of Works in the development of the Historic Parkland. The committee advises the Board on the detailed planning of the site, provides a forum for effective consultation, communication, and represents the various interests in the parkland.

The committee consists of representatives of Sunshine Council, Ministry for Planning and Environment, Ministry for the Arts, Friends of Maribyrnong River, Maribyrnong Residents Association and the Living Museum of the West.

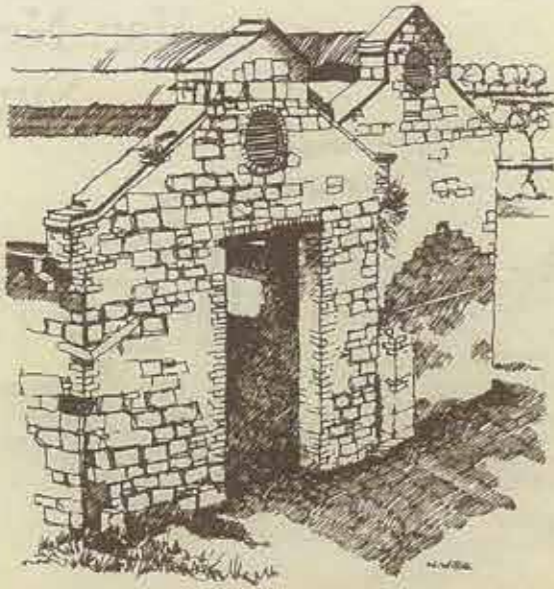
What is Happening

Historic Parklands are being developed on the banks of the Maribyrnong River off Van Ness Avenue, Sunshine.

The area is rich in industrial history and has been the scene of several Australian innovations which have been of world wide significance.

The Melbourne and Metropolitan Board of Works are developing the site as part of the Urban Waterways Program using a \$2.0M grant from the State/ Federal Commemorative Bicentennial Program.

When completed the area will provide 18 hectares of parkland and a visitor centre, which will provide an explanation of the significant industrial history associated with the interesting old bluestone buildings on the site.



The Parkland

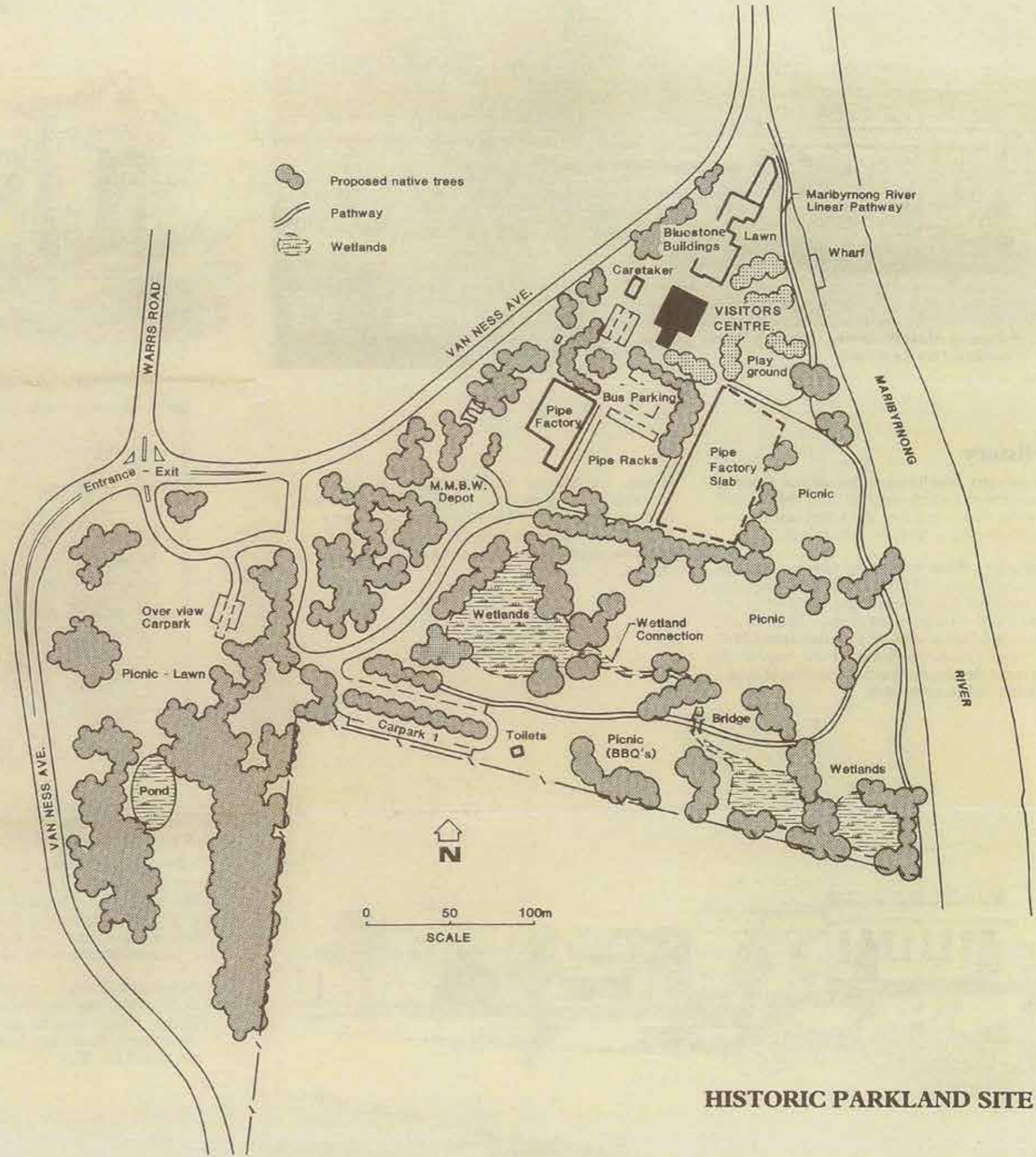
Revegetation of the parkland and wetland area's with indigenous plants is to be undertaken and this work will also include Sunshine Council's Thompson Reserve which is being developed at the same time. Within this parkland, facilities will be provided for picnics and informal outdoor activities.

The Visitor Centre

The Visitor Centre in the historic buildings will provide information on the history of the site and of the whole of the Maribyrnong Valley. As such, it will become a focal point for visitors to the Valley.

How to get there

Visitors can come to the Parkland via an entrance road off Van Ness Avenue, on foot or bicycle along the Maribyrnong River Trail beside the river or from the water via a landing wharf on the banks of the Maribyrnong River.



HISTORIC PARKLAND SITE