

1/6/1/1

LIVING MUSEUM			
DATE:		REF.: 1/6/1/1	



ANNUAL REPORT
OF
MELBOURNE'S LIVING MUSEUM OF THE WEST

17TH MARCH, 1987

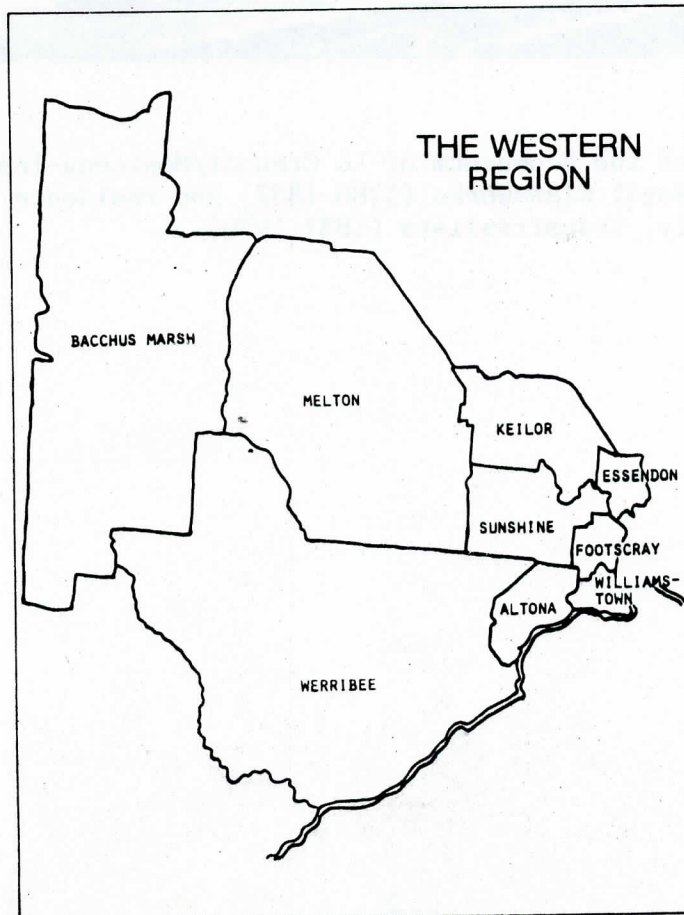
ANNUAL REPORT OF

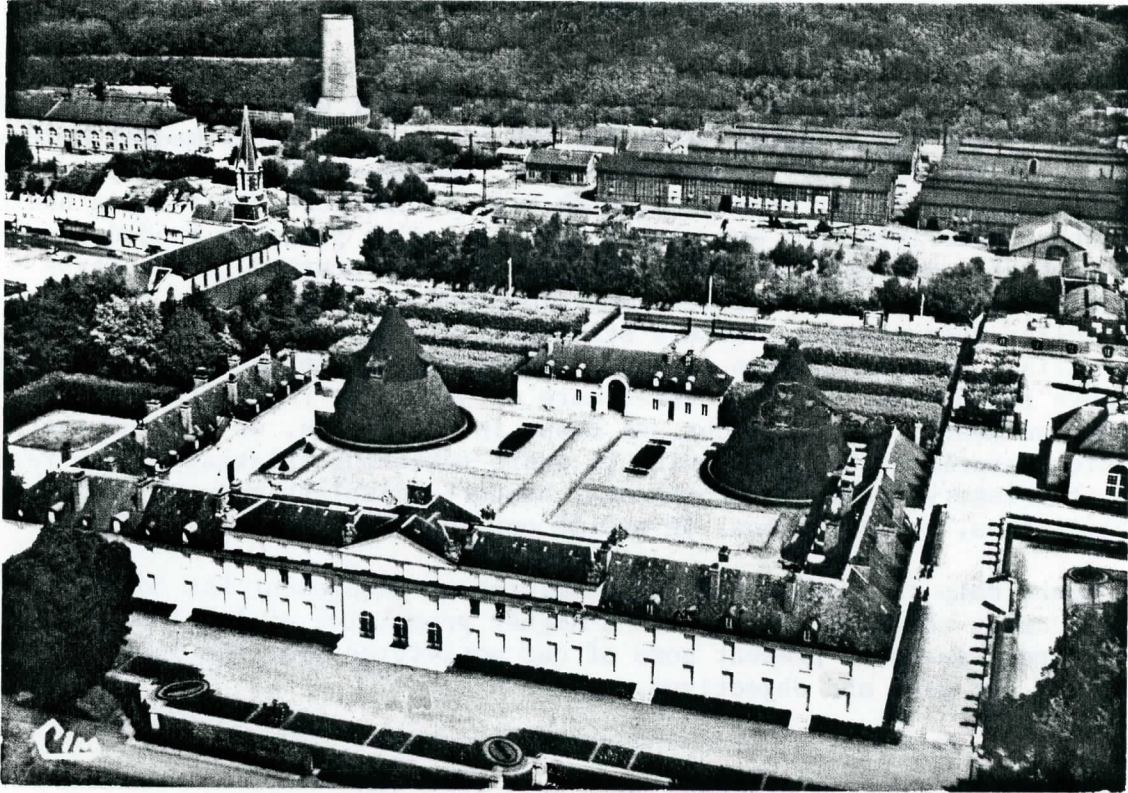
MELBOURNE'S LIVING MUSEUM OF THE WEST INCORPORATED

17 MARCH 1987

1986-7 was the third year of our Museum's life, but was the first year of funding by the Victorian Ministry for the Arts, as an experimental museum project. We gratefully acknowledge this funding which has made possible the development of our ecomuseum, with a full-time core staff and a basic structure underlying all our activities, including projects funded elsewhere. The idea of a museum which is a region, a people-focussed, community-oriented museum, is in fact very ambitious and still a novelty on the Australian museum scene. We are still the only museum of its kind in Australia. We still have a long way to go, but in the last twelve months we have reached out to and covered more of our large region than in the first two years. As we go out and about in the region, we do find that people appreciate the opportunity to share something relating to the region and its history, whether through oral history, displays and exhibitions, publications, tours, videos, or use of our Resource Centre.

Our membership is growing and our Committee of Management has become much more locally representative, with a higher proportion of local people. This report seeks to present some of our activities over the past year, in terms of our aims and objectives.





Headquarters of the Ecomuseum of Le Creusot/Montceau-les-Mines, formerly the Royal Glassworks (1786-1832) and residence of the Scheider family, industrialists (1837-1970)

AN ECOMUSEUM OF MELBOURNE'S WEST

1. To establish a permanent ecomuseum within the context of Melbourne's Western Region, a concept whereby the total community, its environment and its heritage are considered as part of the Museum, focussing the main emphasis on the people of the region rather than on artefacts, and operating from one or more fixed bases throughout the region.
11. To act as a catalyst to development of ecomuseum activity in Australia.

The practical implications of being an ecomuseum of Melbourne's West

Some progress has been made in putting the idea of an ecomuseum into practice, during 1986 and early 1987. We have built up links with individuals and organizations in all the region's nine municipalities. We have worked as and with local people in research projects, contemporary documentation, displays, publications and tours. We have broadened our funding base and have undertaken projects for the local councils of the City of Sunshine, the Shire of Bacchus Marsh and the City of Footscray. The Melbourne & Metropolitan Board of Works is working with us on detailed proposals for occupancy of the Humes site by Melbourne's Living Museum of the West and our involvement in interpreting the site. We are developing links with the corporate sector. I.C.I. continues to be a member. We did a display for Humes/ARC. Altona Petrochemical Company have sponsored our exhibition program with a donation of \$1000 for the purchase of a set of portable display boards. Our headquarters continues to be a small house at 14, David Street, Footscray, rented from Footscray Institute of Technology.

Development of the ecomuseum idea

Two members of staff have been involved in researching the idea of the ecomuseum and relating it to Melbourne's Living Museum of the West. Rod Faulkner gave a paper on ecomuseums at the national conference of the Council of Australian Museum Associations, in Perth, October 1986, Ecomuseums and Melbourne's Living Museum of the West were also the theme of Rod's thesis, as part of his Graduate Diploma in Museum Studies, at Victoria College, which gained Distinction. Olwen Ford undertook a privately financed investigation into one ecomuseum, probably the world's best-known ecomuseum, at Le Creusot/Montceau-les-Mines, in the centre of France, in June 1986. It was good to learn at first hand something of this important ecomuseum and to meet and talk with the Director, Phillippe Jessu, and some of the local people. Olwen also visited industrial and folk museums and heritage centres, in Northern England and South Wales, and spent some time at the Dept. of Museum Studies, University of Leicester. This is all valuable experience as we plan our future development and our permanent headquarters on the Humes site, as the base for operating throughout the region.



Community Exploration Day at Melton, Heritage Study, 8 February 1986
Talk by John Lack



'Working at I.C.I.' Make history group, meeting at the Hunt Club
Community Centre, July 1986

RESEARCH AND PRESENTATION

2. To develop a greater understanding of the history and culture of Aboriginal and non-Aboriginal peoples and the environment of Melbourne's Western Region.
3. To record and present the history of working people in Melbourne's Western Region, up to the present day.
4. To involve the people of the region in the collection, research and presentation of this history.
5. To use a wide range of presentation methods, including exhibitions, video, publications, theatre, public events, and other participatory activities.

Museum research has been mainly related to the cultural heritage of the region, but we have also begun to document the region's natural heritage. The theme of work has been an important focus, though often inseparable from the natural environment of Melbourne's west - lime kilns, chaff mills, bluestone quarries. All our research projects have involved participation by local people. The main projects have been-:

Heritage Study of the region - historical outline : report
- paper on interpretation: report

Oral history of Coimadai lime kilns:report

Work at I.C.I. - 'Make History' group of ex-employees: booklet & display
Work at McKays/Massey Ferguson - 'Make History' group, ex-employees: display

La Foam- an industrial case study: report

Massey Ferguson Site Study Stage 2: report

Kororoit Creek Tour:brochure

Chaff mills of Melbourne's West: report (brochure also planned)

Bluestone Quarries of Melbourne's West: work in progress

Hume Pipes, Maribyrnong: work in progress

Footscray Wharves survey:work in progress

Kororoit Creek - a history of occupation: video and school kit

Other forms of presentation have been-:

Duty Nobly Done:Sunshine Harvester Diary 1987 & Diary launching at Sunshine

3 WRB test broadcast: series of programs on heritage

3 CR re-broadcasting of Lifeblood of Footscray programs

Bacchus Marsh Past Presidents Photographic Gallery

Museum brochure - 'What on earth is the Living Museum of the West?'

Members' tour of the region

Heritage Workshop/Community day: part of the Heritage Study

Participation in tour of Bacchus Marsh with Bacchus Marsh Historical Society

Display program in local libraries and schools

Regional shopping centre display program) see next section

Williamstown Festival & Saltwater Festival displays)

Melbourne's Living Museum of the West is the channel of funding for a grant from the Australia Council's Community Arts Board to Time and Motion Theatre for a theatre production relating to women munitions workers in World War Two. The Museum continues to distribute its publications. These include six books, a calendar, a set of cassettes, greetings cards, brochures, videos. Our first publication, the Munitions Diary 1985, Go West, Young Woman, is now out of print. The Kororoit Creek video is attracting considerable attention from local schools.



Museum Display at Altona Gate Shopping Centre, February 1987



A cleaner pauses in his work to look at the Museum's Display, Altona Gate Shopping Centre.

EXHIBITIONS

12. To develop and promote community museum activity which is interactive and innovative.
13. To develop the techniques of presenting exhibitions and related activities as effective communication devices.
14. To undertake pilot projects in a number of areas within the ecomuseum context on an experimental basis.

Our museum continues its commitment to the development of exhibitions. A specially interesting example was a display commissioned by Humes/ARC for their open day. The Museum's media co-ordinator incorporated comments from workers into the display and their view of the factory's importance in the city streetscape. At the Williamstown and Saltwater Festivals, video is a popular component of our display. The three-day Williamstown Festival display in the Old Williamstown Post Office attracted hundreds of people. Thousands of people are now seeing our displays at the regional shopping centres, especially at Highpoint. Our displays have been at the following locations:-

Hunt Club Community Centre, Deer Park (City of Sunshine)
Footscray Institute of Technology Library
Footscray West Library
Newport TAFE
Moonee Valley Regional Library
Sunshine City Library
Altona City Library
Bacchus Marsh Municipal Offices
Lynch's Bridge Project Headquarters, Newmarket
Kilbreda Hall, Mentone
Albion Primary School
Ardeer High School
Sunshine Municipal Offices
Altona Gate Shopping Centre
Highpoint City Shopping Centre
Melton Regional Shopping Centre
Sunshine Plaza
Werribee Plaza
Curriculum Centre, Sunshine

Some displays are based on units developed for the Chops and Chimneys exhibition in May-June 1985. The paintings of Le Van Tai are an important exhibition. Some displays have been developed recently, for example, 'History all about you' and 'Westside Story'. Displays are usually booked out to local community centres. The displays in shopping centres are rather different, since Museum staff are in attendance to answer questions, write down comments, sell Museum publications, or take orders for photos. These displays are on a roster, averaging once a week, usually Fridays. The displays change once a month. Free takeaway brochures are available. Public response shows that people do like to see such displays and the staff on duty get a range of comments, mainly appreciative. We feel this display program is a valuable form of outreach and community contact and we hope to develop it and improve it further. It is a very demanding program, from the point of view of staff, since it involves considerable time and physical effort, and working on Friday evenings.



CEP Resource Centre Team, July-December 1986
Left to Right: Karen Merry, Di Cranston, Ted Weaver, Zladko Arsov



Gary Vines, researcher and industrial archaeologist, at the wordprocessor
February 1987

9. To develop a Heritage Resource Centre for the region.

The Resource Centre holds our collection of audio-taped interviews, transcripts, videos, maps, photographic archive, slides, displays, statistics, reference books, the paintings of Le Van Tai and a small number of artefacts. Cataloguing continues in association with F.I.T. Library's WESTDOC, the region's computerized bibliographical project. We cannot overstate the importance of WESTDOC to the region, and those researching the region. We sincerely hope that funding for its continuance and development can be obtained in the future.

During the second half of 1986, the Museum received a grant from the Community Employment Program for a Resource Centre Operation, with five staff - a cataloguer (Ted Weaver), a photographer (Zladko Arsov), a typist (Karen Merry), an exhibitions officer (Di Cranston), a co-ordinator (Rod Faulkner). All learned new skills and altogether did a great job. We thank them for their contribution. Other Museum staff assisted in the Resource Centre, especially in relation to receiving visitors and in photographic and video-copying services. Photographic orders are an important sideline of the Resource Centre.

The Resource Centre is the repository of all the material researched or collected by Museum staff in the various projects, and the source of material for new exhibitions and other forms of presentation. We have received some very appreciative comments from those who've used the Resource Centre - both because of the content and because of the cataloguing system. We have particularly valuable material on work and migration, and this is being increasingly recognized.

A Museum Studies student, Rebecca Zeusse, spent three weeks with the Museum, on an internship and undertook a special project documenting and cataloguing the contents of two houses in the area. The catalogue is now part of our collection. This project was influenced by the Swedish SAMDOC contemporary documentation project and we hope it can be continued at some future date. We had two Work Experience students, Frances Williams from Werribee High School and Kim Anderson from Gisborne High/Technical School. They both enjoyed their time with us and another student is expected this month.

A system of registering and recording historic sites in the region is being developed and will be a useful resource. The purchase of a word processor has assisted the production of transcripts but materials to conserve the collection, such as acid-free folders, are needed. A slide viewer or projector would be a valuable acquisition.

Rod Faulkner is the Museum's Curator and Registrar. As a result of his work, and the work of our first archivist, Stella Barber, we have a Collection Policy and an Acquisition Policy. Rod has now completed his course for the Graduate Diploma in Museum Studies, undertaken with the financial support of the Museum.



Dr. Euradice Retsila, Curator of the Museum of Greek Folk Art, Athens
with Olwen Ford, Director of Melbourne's Living Museum of the West,
14 November 1986

Some of the Visitors to our Resource Centre

Students from Melbourne College of Advanced Education

Students from R.M.I.T., Caulfield Institute of Technology,

F.I.T. Phillip Institute of Technology.

Students from Deakin University,

Ph.D. Student from Melbourne University.

Student from Sydney University (Museum Studies).

Students from Footscray TAFE Basic Education Unit

Students from St.Kilda Community High School.

Megan Cook, Australian War Memorial Museum.

Dr. George Zubrzycki, ANU/Museum of Australia, A.C.T.

Ian Hay, Museum of Australia, Canberra.

Laurie Parkes, Trades Hall, Adelaide, S.A.

Dr. Euradice Retsila, Curator, Museum of Folklore, Athens.

Elizabeth Willis, Museum of Victoria.

Ian Woodruffe, Director of Royal Historical Society of Victoria.

Peter Hicks and Ric Martin, S.A.

Craig Kirchner, Film Victoria.

John White, Wool Museum, Geelong.

Tim Brasher, Bellarine Shire group

Journalists from local papers.

Teachers from a number of local schools.

Family history researchers.

Local artists preparing a sound album of Melbourne's West.

Richard Curlewis, Oral History Association.

Marian Letcher, Caringbusch Library

A group of Reference librarians from Swinburne Library, La Trobe
University Library, State Library of Victoria, National Gallery of
Victoria, Melbourne High School.

Representative of Women's Information and Referral Exchange.

Ex-workers I.C.I., Massey-Ferguson.

Victorian Wine Industry Association Representative.

We also have a number of telephone enquiries, including requests for
advice and information.



Looking at a lime-kilns site, Coimadai (Lake Merrimu): Jenny Mitchell, Chris Johnston and members of lime-kiln families, 1986



McKays/MasseyFerguson 'Make History' group: Di Cranston and Mr. Vern Bult look at the Bult collection of H.V. McKay material. October 1986

HISTORIC SITES

8. To relate the historic sites and structures of the region to the story of the people of the region.

The Museum has focussed its research on a number of historic sites and structures in the region, especially industrial sites.

Coimadai Lime Kilns, near Bacchus Marsh
Massey Ferguson site, Sunshine
Chaff-mill sites
Bluestone Quarries
Humes site, Maribyrnong

O.Ford's paper on Interpretation, part of the Western Region Cultural Heritage Study, relates to several historic sites and the historic landscape. The Museum is developing its contribution to a cultural heritage strategy for the region. We have supported local efforts to retain and preserve the Yarraville Community Centre, formerly Yarraville Primary School, and the woolshed and complex of outbuildings at Deanside, once the property of the Clarke family, on the Kororoit Creek, near Rockbank in the Shire of Melton. The Museum has been represented on a committee considering the retention of the bluestone square, formerly 'Red Square' in the new development on the Angliss site.

MOBILE MUSEUM SERVICE

7. To create a mobile museum service for Melbourne's Western Region.

Rod Faulkner began our mobile museum service for Melbourne's Western Region by giving assistance to Werribee Historical Society in May 1986. Letters have been sent to all historical societies in the region and it is hoped that there will be ways in which Melbourne's Living Museum of the West can give free assistance in cataloguing, displays and other activities, in the future. There may also be possibilities of helping groups which are not historical societies but who wish to collect and display local material.



Ardeer High School student, Vinetta Kotevski, thanks Bob Simpson and other ex-McKay employees for sharing their memories, launching of Duty Nobly Done, Sunshine Harvester Diary 1987, Sunshine Plaza, 6 November 1986.

LINKING ACTIVITIES IN THE REGION

10. To undertake linking and bridging activities with other groups, projects and institutions in the Western Region.

The Museum is involved with a number of local schools, and tertiary institutions, including Ardeer High School, Laverton High School; Williamstown High School, Marian College, Sunshine, Keilor Heights High School, Sunshine West High School, Lowther Hall, Moonee Ponds, Overnewton Community College, Keilor F.I.T. and Footscray TAFE.

It provides resources such as books, suggestions on how to do local research or oral history, speakers.

Close links continue with Wested, Curriculum centres at Sunshine and Footscray, WEST Theatre, Altona Council's Community Arts programme, Footscray Community Arts Centre, Williamstown Festival organizers, Footscray Migrant Resource Centre, the West Central Regional Group of Historical Societies, individual historical societies of the region.

Participation in F.I.T. Library's WESTEL program meant that our activities e.g. displays are publicized on their computerized information system.

The Museum is represented on a number of local committees - Werribee Park/Point Cook Advisory Committee, Friends of the Maribynong Committee, Wested Centre's Committee of Management, Hunt Club Community Centre Committee of Management, Humes site Advisory Committee, Western Regional Commission Cultural and Natural Heritage groups, Footscray Co-ordinating Activities Committee.

Staff have taken part in a number of local conference and seminars and community events - 'Meet the Writer' at Footscray Library - (Fifty Year 12 students) W.R.C. Cultural Heritage Study Seminar at F.I.T. and a Heritage Study Community workshop at the Hunt Clubs Community Centre, Deer Park.

West Work Industries Open Day.

Western Region Committee on the Ageing Literary Competition and Arts Festival.

Beyond the region, there are important linking activities. Jenny Mitchell gave a very successful talk on our museum to the RHSV State Committee meeting (April 1986). Rod Faulkner gave workshops on oral history at the Chinese Museum and a workshop for teachers at the History Teachers Association of Victoria conference. (November 1986).

A MULTI-CULTURAL MUSEUM

6. To be a multi-cultural museum.

The Museum was involved in videoing and photographing a Community Day held for Ethnic Elderly Citizens Clubs. Our displays include components relating to the history of post-war migration and we continue to distribute copies of Changing Places: Vietnamese Women in Melbourne's West and Migration Jigsaw. The paintings of Le Van Tai are a valuable component of our collection. Dr. George Zubrzycki was impressed with the ethnic material we have in our Resource Centre. We have not undertaken any multi-cultural research projects over the past year, mainly because of our commitment to projects focussing on the theme of work and the local environment. We have prepared submissions relating to two possible multi-cultural projects which may receive funding.

MELBOURNE'S LIVING MUSEUM OF THE WEST
14 David Street, Footscray, Vic. 3011
Phone (03) 689 7293

PUBLICATIONS LIST 1984 - 1986

- (1) "PEOPLE OF MELBOURNE'S WEST", 1986 Calendar.
This calendar contains photographs and quotations illustrating migrant experiences in Melbourne's western region. Printed in English, Greek, Italian and Yugoslav.
- (2) YARNS: CREATIVE WOMEN IN MELBOURNE'S WEST
Eleven women talk about their lives at home and at work with particular reference to their creative activities.
- (3) THE LIFE BLOOD OF FOOTSCRAY: WORKING AT THE ANGLISS MEATWORKS
This book contains interviews with meatworkers about their memories of work and pastimes; friends; stories; strikes; foremen and politics.
- (4) THE LIFE BLOOD OF FOOTSCRAY: WORKING AT THE ANGLISS MEATWORKS
A series of three audio tapes, containing six programs about memories of the Angliss meatworks; work and pastimes; friends; stories; strikes; foremen and politics.
- (5) CHANGING PLACES: VIETNAMESE WOMEN IN MELBOURNE'S WEST
This book contains extracts from conversations describing life for women in Vietnam, in refugee camps and in Melbourne's western suburbs.
- (6) LIFE LINES: STORIES BY WOMEN IN THE WESTERN SUBURBS OF MELBOURNE
This book contains stories from a variety of women from different age groups and ethnic backgrounds, describing their experiences of paid and unpaid work in Melbourne's west.
- (7) MIGRATION JIGSAW
This booklet contains edited tape interviews with: Stella Papa-Christodoulou; (Greek); Jordan Duzelovski (Macedonian); Lucia Ugoni (Italian) and Huu Hoa Nguyen (Vietnamese). These people describe their experiences of arriving and living in Melbourne's west.
- (8) AMMUNITION FACTORY
A booklet by Melbourne's Living Museum of the West on five women who were interviewed about their early days at the Ammunition Factory, Footscray.
- (9) GO WEST, YOUNG WOMAN
1985 Diary with extracts from conversations with female munition workers.
- (10) GREETING CARDS
Six (6) cards with photos of local people and places and the caption 'Greetings From Melbourne's Western Suburbs.'
- (11) DUTY NOBLY DONE: SUNSHINE HARVESTER DIARY 1987
Men and women at work for McKay Harvester Works and Massey-Ferguson, Sunshine. Extracts from conversations and photographs.
- (12) KOROROIT CREEK
Tour brochure indicating sites of interest along Kororoit Creek from Altona to near Diggers Rest.

APPRECIATION

Funding Bodies

Our thanks go to our funding bodies for their financial support and encouragement - the Victorian Ministry for the Arts; the Victorian Ministry for Planning and Environment; the Victorian Ministry for Conservation, Forests and Lands; Sunshine City Council, Footscray City Council and Bacchus Marsh Shire Council; the H.V. McKay Charitable Trust for their generous contribution to production of the Harvester Diary 1987; TAFE West for grants to run the 'Make History' Groups; the Western Region Commission.

Use of facilities

We thank Footscray Institute of Technology Library for use of the WESTDOC computerized cataloguing facilities; WESTED Centre for use of their darkroom and editing facilities; the Education Ministry's Western Metropolitan Region, Footscray Community Arts Centre, and the Hunt Club Community Centre for use of their facilities; F.I.T., for use of 14, David Street and Footscray TAFE for use of the Auditorium for our Annual General Meeting.

The Wider Community

As the Museum reaches its third birthday, there are many individuals and groups who should be thanked for their contribution - Wally Eacott and John Lack for their work in the early establishment days, Joan Kirner for her vision and strength, David and Eva Yencken for sharing their knowledge and experience, the local people who supported the initial idea and who have kept up their interest. In more recent times, we thank our newest supporter, the Altona Petrochemical Company, for their generous donation of \$1000 for purchase of a set of display boards. We believe our Shopping Centre Exhibition Program to be one of the most important of the Museum's activities, and we do thank A.P.C. for their sponsorship.

Committee of Management

Special thanks go to President of the Museum, Colin Thorpe, and Vice-Presidents Morag Loh and Peter Somerville, for their commitment to the Museum during 1986-87 and their interest in Museum staff. Morag Loh did valuable work contacting companies in the region and we thank her for this.

We thank all members of the Committee of Management for attending meetings, contributing their views and for behind-the-scenes encouragement and support. We thank John James for his work on the Finance Committee and Roger Trudgeon for his advice and inspiration.

Members

We thank the members of the Museum for their contribution and interest, particularly Geoff Cooper for his help with the newsletter and with manning displays; Jenny Mitchell, Di Beevers and Frank Ford for their help in manning displays, and to Irene Wescott for her offer to help with cataloguing.

Staff

The staff should be thanked for all their hard work, especially past staff who have been with the Museum since its early days in 1984, and who have given very dedicated service - Carmen Winter, Jenny Mitchell, Joe Mastroianni; CEP staff in 1986 - Ted Weaver, Di Cranston, Zladko Arsov and Karen Merry, who has remained with us a little longer.

THE CURRENT SITUATION

Staff

Olwen Ford - Director	Rod Faulkner - Assistant Director
Peter Haffenden - Media Co-ordinator	Mark Dawkins - Financ Officer
Dianne Parsons - Researcher (part-time)	Gary Vines - Researcher (part-time)

Membership

Total - 150	9 Life Members
	2 Honorary Life Members
	1 Corporate member
	31 Institutional Members
	14 Family memberships

Sources of Funding - 1986

Ascot Vale Tenants Group	\$1,000
W.R.C. Heritage Study	\$10,000
Bicentennial Design brief	\$ 1,840
Massey Ferguson I (MPE/WRC)	\$ 2,500
Massey Ferguson I (Sunshine Council)	\$ 2,500
V.A.L.G. (Make History groups)	\$ 1,400
Massey Ferguson II (MPE/WRC) (Sunshine Council)	\$ 9,016
Kororoit Creek Tour brochure	\$ 3,012
Laotian artist & display program	\$ 7,500
H.V.McKay Charitable Trust	\$ 4,000
Rural Water Commission	\$ 5,858
Ministry for the Arts	\$75,000
Ministry for Conservation	\$10,000
Community Employment Program	\$55,777

Other Sources of Income

1986

Membership	\$ 2,059
Sale of Publications	\$ 9,139
Bank interest	\$ 2,657
Miscellaneous income	\$ 3,954

Funding granted for 1987

Ministry for the Arts	\$80,000
VALG	\$ 900

Funding sought

Ministry for Conservation, Forests and Lands
Ministry for Planning & Environment/Western Region Commission
Community Employment Program
Sunshine Foundation
Footscray City Council
Sunshine City Council

The above figures give some indication of the variety of funding sources, and are not intended as a complete financial statement.

FUTURE DIRECTIONS: 1987 - 1992

A statement on future directions was prepared for the Victorian Ministry for the Arts in June 1986. It is reproduced here as an indication of the way ahead for our museum. It should be stressed that the work heritage refers to cultural and natural heritage.

* * * * *
The Museum is developing a plan for the next five years, from 1987 including a major focus in 1988, but extending on into the 1990's. Some of the most impressive museums in the world today, we observe, have taken several years to develop before opening. Melbourne's Living Museum of the West sets itself in an international context and takes note of major participatory and community-oriented museum developments, while remaining sensitive to the unique characteristics of Melbourne's West. The five year plan is based on what has already been achieved and learned in the first two years of operation.

Development of a Permanent Headquarters

- * to serve as an introduction to the region
- * a base for operations throughout the region
- * a heritage resource centre for the region
- * an introduction to the concept of the ecomuseum

Location - Humes site, by courtesy of Melbourne Metropolitan Board of Works.

Time - 1988 onwards.

The Museum is now moving into a most crucial phase of development. It is essential that the Museum has a physical presence in the region, in terms of a site and a building of adequate size where Museum resources can be easily located and used by the people of the region and visitors from other parts of Melbourne, Victoria, inter-state and overseas. It is hoped that the Museum's Heritage Centre could include or be linked to refreshment facilities and a shop.

Development of a Permanent Exhibition

Introducing Melbourne's western region, Window on Melbourne's West and forming the key component of a **Heritage Centre**.

This will build on the Museum's first exhibition, Chops and Chimneys and subsequent travelling exhibitions, 1985-86. It will focus on major themes in the region's past and present, with a special emphasis on major sites and structures in the region which can be visited and major happenings and events occurring at particular times at local centres.

Location of exhibition - initially in the City (e.g., A.M.P. Centre), thereafter at Humes. Segments of the exhibition may tour local areas.

The exhibition will link in with the Bicentennial Programme. It will include audio-visual components and will aim to be participatory and interactive. It will include a component on the Humes site itself and the Maribyrnong River Valley.

Time - 1987 - preparation of exhibition

1988 - initial presentation

1989 onwards - location at Humes

1990-91 - further development of exhibition

Development of Temporary and Travelling Exhibitions

Temporary exhibitions will a) build on research undertaken previously, b) result from specially funded or sponsored projects e.g., local councils, local industries, c) be undertaken in conjunction with local community groups on matters of particular concern.

Location - local or regional centres

- Humes site

Time - 1987-91

A methodological component will be built into the travelling and temporary exhibitions programme so as to share knowledge, techniques and skills, in relation to exhibition presentation.

Development of a Heritage Network throughout the Region

This would build on the contacts already made with local historical societies, community centres and local councils. It would respect the integrity of local initiatives (e.g., local museums) but seek to make them better known and their significance more fully understood.

The Museum's Resource Centre would continue to work in with and offer a support-service to historical societies and community groups, and would help to build up the existing regional network to service the needs of students and teachers in schools and tertiary institutions in relation to the region's heritage.

The Museum would seek and undertake funded projects for local councils which would fit into a total regional heritage context and be linked to a regional heritage programme.

The Museum's headquarters would serve as a base for such a network and for a mobile unit to tour the region.

Development of a Heritage Programme in the Region

The Museum would develop a regional heritage programme in conjunction with local groups and councils. This would a) include a series of tours, walks, trails, with a guided commentary and a series of publications in the form of brochures, posters, postcards, maps, to make the historical sites and structures of the region better known and understood. b) link in to regional festivals and community happenings; to educational programmes, including adult educational programmes; and to tourism. c) be related to a programme of contemporary documentation (photographic and video) to record cultural activities in the region and ensure documentation, cataloguing and retrieval within the Museum's Resource Centre.

Development of an Interpretation Programme on the Humes Site

The chairman of the Melbourne Metropolitan Board of Works and Melbourne Metropolitan Board of Works staff have strongly supported the concept of occupancy of the Humes site, Maribyrnong, by Melbourne's Living Museum of the West. The Museum is included in current plans and proposals and negotiations are proceeding regarding future use. The grant of \$2 million received through the Bicentennial Programme for work on the Humes site will include adaptation of one building for use as a visitors' centre and, with the Museum playing a major role in the interpretation of the site. A major emphasis would be the social history of the site - the theme of work on the site and the heritage of the Maribyrnong River Valley and Melbourne's Western Region.



AEROPLANE VIEW OF THE WORKS OF THE HUME PIPE CO. (AUST.) LTD., MARIBYRNONG, NEAR MELBOURNE, VIC.

Substantial research on the Humes site has already been undertaken by Museum staff. Participation in an oral history programme with Humes former workers is planned. A photographic exhibition on the Humes site is being developed and plans are being made for an audio-visual presentation on the Humes site.

However, clear government commitment and support for Melbourne's Living Museum of the West over the next five years is urgently needed to give a realistic basis to current negotiations and to validate the Museum's proposal to operate on this site. The site is complex and the Melbourne Board of Works does not have a large staff to undertake an educational and cultural programme in terms of social and industrial history. The site and the visiting public would benefit from the Living Museum's occupancy and activity. The Museum would be in a unique position to develop and facilitate an imaginative and interactive approach to interpreting the site and making it known to the general public.

Activities arranged in conjunction with other cultural community-based groups e.g., WEST Theatre. Footscray Community Arts Centre and other community arts centres, would help to put the Humes site in a regional context and develop its potential as an asset to the cultural life of the region.

A substantial grant from the Ministry for the Arts can help to consolidate Melbourne's Living Museum of the West so that it will more effectively fulfil its role as an ecomuseum. Funding will be sought from a number of areas - federal and state government, local government, regional and other agencies, the corporate sector. However, for any funding, a core team of staff is essential; continuity, and the building on of previous experience is important to our Museum. We are an ambitious regional project. Our region, of over 400,000 people and over 700 square miles is a challenge to any museum. The whole concept of an ecomuseum is under trial in our region and it is clear that the progress of our Museum will be watched with great interest.

The basis of our Museum is the people themselves. To serve the people, we need an effective team and the material resources to carry out the work.

AUDITOR'S REPORT

To the Member's of the
Melbourne's Living Museum of the West Incorporated,

In my opinion the accompanying accounts, being the Balance Sheet and the Profit and Loss Account have been properly drawn up so as to give a true and fair view of the financial position of the Museum at 30th June, 1986 and the results of its Operations for the year then ended.

Wol Borkut, AASA-CPA
Auditor.

MLM

MELBOURNE'S LIVING MUSEUM OF THE WEST Incorporated

SOURCE AND APPLICATION OF FUNDS STATEMENT

FOR THE YEAR ENDED 30th June, 1986

DURING THE YEAR FUNDS WERE MADE AVAILABLE FROM :-

Net Profit	8,483	
ADD Charge not absorbing Cash - Depreciation	5,411	

		13,894
Decrease in Cash at Bank		807
Decrease in Savings Account -National Australia		12,299

		27,000
		=====

AND APPLIED IN THE FOLLOWING MANNER:-

Increase in Savings Account for CEP Grant		27,000

		27,000
		=====

MLM

MELBOURNE'S LIVING MUSEUM OF THE WEST Incorporated

BALANCE SHEET

As at 30th June, 1986

PRIOR PERIOD			
\$		\$	\$
	<u>TRUST FUND</u>		
-	Surplus for the year	8,483	
47,539	Accumulated Surplus	47,539	
-----		-----	
47,539			56,022
-----			-----
47,539	<u>TOTAL TRUST FUNDS</u>		56,022
=====			=====
REPRESENTED BY:-			
	<u>CURRENT ASSETS</u>		
1,016	Cash at Bank	209	
14,567	Savings Account -National Australia	2,268	
-	Savings Account for CEP Grant	27,000	
4,905	Stock of Publications (at cost)	4,905	
-----		-----	
20,488	<u>TOTAL CURRENT ASSETS</u>		34,382
-----			-----
20,488	<u>WORKING CAPITAL</u>		34,382
	<u>FIXED ASSETS</u>		
27,051	Office Machines	27,051	
-	Provision for Depreciation	(5,411)	
-----		-----	
27,051	<u>TOTAL FIXED ASSETS</u>		21,640
-----			-----
47,539	<u>NET ASSETS</u>		56,022
=====			=====

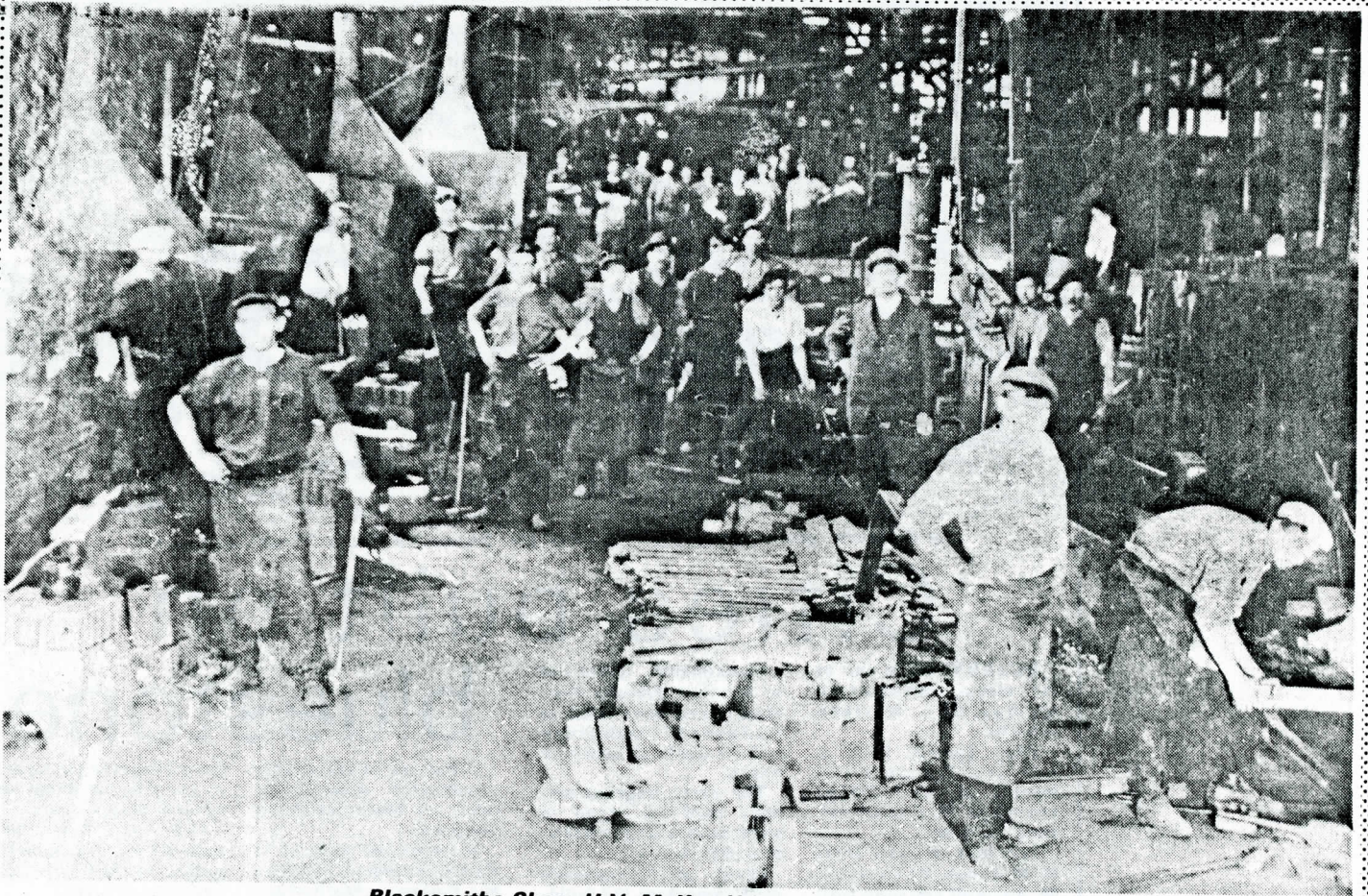
MLM

MELBOURNE'S LIVING MUSEUM OF THE WEST Incorporated

PROFIT & LOSS ACCOUNT

For the Year Ended 30th June, 1986

PRIOR PERIOD			
\$		\$	\$
	<u>INCOME</u>		
-	Various Grants		161,425
-	Sales of Publications		10,038
-	Sundry Receipts		3,446
-	Interest received		3,335
-	Donations		241
1,026	Membership Fees		3,306
-	CEP Grant (unused at balance date)		27,000
-----			-----
1,026	TOTAL INCOME		208,791
	<u>LESS EXPENSES</u>		
-	Accountancy fees		160
-	Advertising and Promotion		1,097
-	Audit Fees		420
10	Bank Account Charges (Government)		457
-	Depreciation		5,411
-	Exhibition Expenses		5,975
-	Hire of Equipment		1,870
-	Hire of Venues		959
-	Insurance - Workcare		1,377
-	Consultancy Fees		7,293
-	Postages		1,739
-	Printing and Publication Expenses		12,450
-	Power and Light		1,111
	Repairs & Replacements:-		
-	Office Machines	594	
-----		-----	
-	Salaries		143,106
-	Sundry Expenses		665
-	Stationery and Office Supplies		10,620
-	Seminars/Training - Employees		1,140
-	Telephone		1,003
-	Travelling		2,861
-----			-----
10	TOTAL EXPENSES		200,308
-----			-----
1,016	<u>NET PROFIT</u>		8,483
=====			=====



Blacksmiths Shop, H.V. McKay Harvester Works, c.1900.

Harvester on show at Plaza

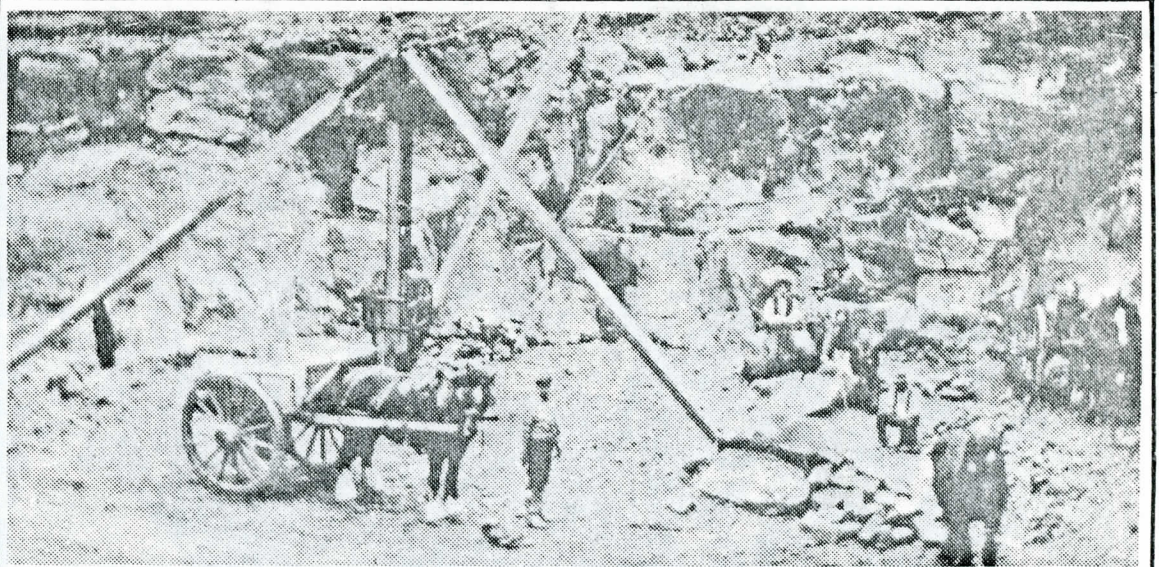
A scale model of a 1904 H.V. McKay Sunshine Harvester, will be on public display at the Sunshine Plaza central mall for one day only. It is on loan from the Museum of Victoria to the Living Museum of the West.

The Harvester model may be viewed throughout Thursday 6 November. It will accompany a small exhibition about the McKay Harvester Works.

The exhibition is part of the Living Museum's launching celebrations for its new publication, *Duty Nobly Done Sunshine Harvester Diary 1987*.

The model harvester is quite large. It measures approximately two feet by three feet. It is historically significant in itself because it was used by H.C. McKay early this century to market the real harvesters in such places as Russia. McKay was a pioneer in Australian exports of industrial goods.

For further information about the display of the harvester model, contact the Living Museum of the West on 689 7393.



● Roberts' quarry in Sunshine, now the Sunshine Plaza Shopping Centre.

Cities built on bluestone

QUARRYING is one of the oldest industries in Melbourne's western suburbs.

They sprang from a massive basalt plain formed at least 250,000 years ago from local volcanic activity.

The flow of lava from Mt Macedon, Mt Cotterell, Mt Kororoit and other volcanoes, has endowed the area with huge quantities of bluestone.

Inestimable quantities of western suburbs bluestone have been used in road and rail construction and all kinds of concrete works.

The early migrant settlers used the stone to build houses and schools, churches and halls.

Many of Melbourne's most important old buildings were built with bluestone from the western suburbs.

St Patrick's Cathedral is constructed almost entirely of bluestone from the area.

It forms the base of St Paul's Cathedral, Flinders St Railway Station, the Melbourne Town Hall, the museum and public library in Swanston St.

Large quarries have been worked in Albion, Braybrook, Maidstone, Newport, Maribyrnong, Altona, Brooklyn, Sunshine and Footscray.

The industry has provided employment for thousands of local residents from the 1840s until the present day.

Over the years, quarrying methods have changed. Labor-intensive methods of removing stone, a combination of muscle and heavy tools, have given way to more highly mechanised methods.

Disused quarry sites

have attracted youngsters as exciting but dangerous natural playgrounds.

Old sites have been turned into playing fields, parks, rubbish tips and shopping centres.

Highpoint West was built on an old quarry site, as was the Sunshine Plaza and Altona Gate.

The reclamation of old quarry sites has sometimes proved controversial, as in the current dispute at Yarraville where an old site is being proposed for a shopping centre.

Melbourne's Living Museum of the West wishes to document the history of bluestone quarries in the western region.

The museum wishes to contact people who have worked in local quarries or who have family connections with the industry.

It is seeking old photographs, written records, newspaper items, letters, artifacts and wants to tap people's memories.

The museum aims to build up a picture of the ways in which bluestone quarries developed.

If you have any photos which the museum might copy, information on old sites, or any memories you would like to share, contact Melbourne's Living Museum of the West, 14 David St, Footscray, telephone 689 7293, and ask to speak to Dianne Parsons or Olwen Ford.

THE MAIL/ADVERTISER, WEDNESDAY 25 FEBRUARY 1987 — PAGE 7

Williamstown

Advertiser



● ABOVE: Quarrymen (and their dog) at Roberts' quarry, now the site of the Sunshine Plaza. Does anyone recognise them?

Plaza on historic site

THE Sunshine Plaza is built on the site of an old Sunshine quarry known as Roberts' quarry.

This was only one of dozens of quarries in the area. The industry has provided employment for thousands of local residents from the 1840s until now.

Bluestone, or basalt, was deposited at least 250,000 years ago by local volcanic activity.

Meibourne's Living Museum of the West is seeking the assistance of local residents to compile information on the history of quarrying in the area.

It is seeking old photographs, written documents such as letters, and people's living memories.

The museum wants to talk with people who worked in quarries or who had family connections with the industry.

It aims to compile information on quarry sites, ownership, quarry products and their usage, and the skills developed by quarry workers.

Any information will be welcomed by Dianne Parsons or Olwen Ford, at the museum on 689 7293.



SUNSHINE HARVESTER AT THE PLAZA

Page 4 WESTERN NEWS, Tuesday 4th November, 1986

A SCALE model of a 1904 H.V. McKay Sunshine Harvester will be on public display at the Sunshine Plaza central mall for one day only, this Thursday, November 6. It is on loan from the Museum of Victoria to the Living Museum of the West.

The exhibition is part of the Living Museum's launching celebrations for its new publication, *Duty Nobly Done Sunshine Harvester Diary 1987*.

The model measures about two feet by three feet, and is historically significant in that it was used by H.V. McKay early this century to market the real harvesters in such places as Russia.

SUN Weekend

Life on the West's killing floor

FOR most of this century, Angliss's Meatworks, a ramshackle conglomeration of red brick buildings, sheds and pens, sprawled along the Maribyrnong River at Footscray.

Angliss's and its neighbors, the abattoirs and sawyards, usually welcomed visitors with a miasma of aromas of blood, dung, tallow and tanning skins.

But to the people of Footscray, that was the smell of work.

By GARY TIPPET

Work was hard and dirty and sometimes even callous and cruel. But for me it was more than work — it was an education.

It was a place to learn of the harsh realities of life; of the best traditions of Australian unionism; and, to learn about people.

And it is the people of Angliss's who stand out in a new book from Melbourne's Living Museum of the West called *The Lifeblood Of The Meatworks*.

Until it was 'torn down for a housing project last year, 'Anglies, or more properly the Imperial Freezing Works, had been the largest employer in Footscray.

In the best times more than 2000 people made their living there, either on a permanent or precariously seasonal basis.

In the late '60s I was one, lining up at the Lynch St gates every school holiday to get anywhere between two and seven weeks of laboring work.

In the cold early mornings, my mates and I would wait with a 100 or more hopefuls until a bloke would bless a few lucky ones with a cursory: "You, you and you."

I worked the scales at the hanging yard, where we tagged and labelled the butchered sheep; the smallgoods, where we cooked frankfurts in thousands; and the cannery, where I packed crates with tins of lamb's tongue and braised steak.

Later, I was on the mutton chain, that gory disassembly line where thousands of sheep were separated from their constituent parts.

Eventually I was sent to be a shacker in the "sticking pens," where more than 2500 lambs had their throats cut each day.

Albert Hart, who started in 1936 at 14 in the rabbit department, puts it best: "Angliss's was known to all as the premier meatworks of the nation and was also lovingly called 'Dunces' College'."

"These words had real meaning to all, because once inside the gates you met with, worked with, lived with, talked to and spent a lifetime with people who knew something about all things.

Mr Hart is one of 13 workers who tell their stories in the book.

They remember, usually fondly, the Depression, when the work was mainly seasonal; the growth of their union, the strikes, the appalling conditions, the skills and the camaraderie of the workers.

Opened by William Charles Angliss in 1905 with 120 men, the works grew quickly. In the first season, 11,000 sheep and lambs were slaughtered, but by 1917 the company claimed it could kill that many in a day.

Back then slaughtering was done solo. The slaughterman, an artist at his trade, would kill and butcher his beast and like any top worker, he had the respect of his community.

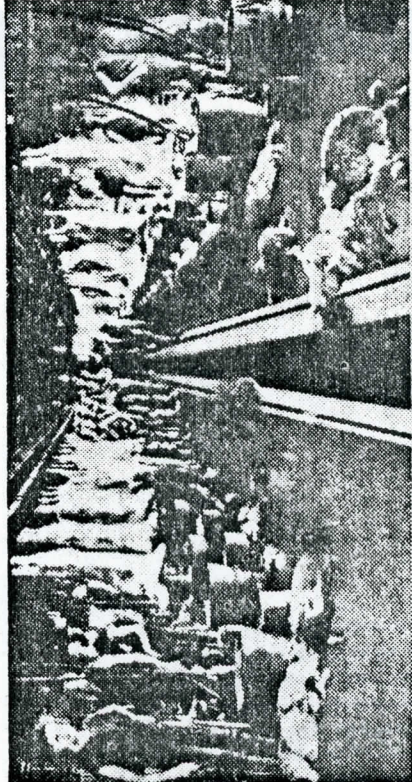
Bernard Leunig, remembers: "Well you talk about the shearers, the old bushes; the old slaughtermen had the same thing about them. They were people apart ..."

"One character, old Budge McFarlane, now he was famous. He was the top shearer in his off-season, great shearer, great slaughterman.

"When they'd start in the morning, right bang half past seven into it, and old Budge, he'd be the first to have his finished.

"He'd hang it up on the hook, not a mark on it, and he'd stand and he'd admire it and he'd be calling out to the others. Have a look at this, not a mark, not a blemish."

The chain system introduced in 1933 put an end to the solo slaughtering glory by dividing the work into specialised tasks as car-



● The solo slaughtermen on the sheep line.

cases moved along an overhead conveyor belt.

It also sparked a massive, but unwinnable strike.

Bernard Leunig, who spent almost every day on the picket line, still hates the scabs who came to break the strike.

"As they came in, they'd ask us where you signed up, perhaps they thought we were after a job too, and bang, bang, bang. I saw people really beaten up. I enjoyed it then because it was good enough for them," he said.

But the strike was destined to fail. Eventually the strikers went back but the pride they'd had in their skills was gone forever.

A leading communist at Angliss's was George Seelaf, who many give credit for rebuilding the union after the '33 strike. George is one of Footscray's favorite sons, but says he had no politics when he began at the works in 1936.

"I think working in industry and

becoming a number instead of a name and seeing all the exploitation changed me," he said.

"I get more angry now that I know that Vestey's (who owned the works from the mid-'30s) didn't pay any tax in Australia. They used to always tell us: 'Abide by the law. There's the Arbitration Commission, why don't you abide by the law?' Here they were breaking the law every bloody day."

Throughout the book there's a schizophrenia about the workers' attitudes. The men and women speak fondly of comrades but vilify the exploitation of bosses; take pride in skills but abhor the conditions they worked under.

Roy Smerdon and George Linnard, who were there when the place closed, sum up the attitudes. Smerdon: "I worked at Angliss's for 40 years and it was never a permanent job. When it closed I got about \$8000 in redundancy pay. Bloody lot isn't it? They gave me this stinking watch for 40 years and I told the bloke to jam it."

Linnard: "I've got a good job now, but it's not better than Angliss's. As far as I'm concerned I'd go back to Angliss's tomorrow if they opened it up again, for sure. It was my second home, I loved it."

But Bernard Leunig puts it best: "I have been asked whether I have any sentimental feeling about the demolition. The answer is no. I have no feeling for bricks and mortar."

"My memories are of the people who worked there, without them there would be no history. They were the creators of that history."

● **The Lifeblood of Footscray: Working Lives At The Angliss Meatworks.** Available from Melbourne's Living Museum of The West, 14 David St, Footscray. \$8 plus \$1 for postage.

Letter to the Editor

Dear Sir,

Melbourne's Western Region Commission has initiated a Cultural Heritage Study of the area.

The aims are, to reach an understanding of how the Western region had developed, to identify themes and places of significance, with a view to conserving what is important to our heritage.

The study has been undertaken by "Melbourne Living Museum of the West", they have approached the Historical Societies in the area, including the Bacchus Marsh and District Historical Society, seeking our co-operation with the project. The Marsh society, arranged a tour for April 13th and members of both groups visited a number of places

in and around Bacchus Marsh.

We are indebted to and wish to sincerely thank a number of people who assisted us, each sharing their expertise with us, in spheres of their own activities. I wish to thank Mr Gus Steegstra, of the Darley Fire Brick Kilns, Cr Bill Shea, on Dairying and Irrigation, The Maddingley Brown Coal Mine, Messers Hine Bros of Rowsley, Inspection of Clay Pits and Mr Peter Forbes, Manager of "Greystones" shearing and related activities, also Mrs Jean Lycetts, who drove the large community mini bus. I believe everyone had a very interesting and informative day.

George J Whitlow
President
B.M.&D.H.S.

T-Bacchus Marsh

Telegraph

OFFICIAL NEWSPAPER of the Shire of BACCHUS MARSH

Museum seeks your chaff mill memories



THE LIVING Museum of the West is calling on western suburbs residents to help it research the history of chaff milling in the western region.

Chaff mills operated in Footscray, Werribee, Melton, Rockbank, Ascot Vale and Bacchus Marsh, providing feed for horses on farms and in the city in the 19th and early 20th centuries.

Today one surviving mill, Trethowan's in Melton, serves the studs and racing stables, riding schools and the many horses kept as pets in the western suburbs.

The Living Museum is keen to talk to local people who worked in any of the mills, saw them operating or bought feed from them.

People willing to share their memories and pictures are asked to contact the Living Museum of the West, 14 David St, Footscray, phone: 689 7293.

The Western Times, Wednesday, February 4, 1987 - Page 17

THE Western TIMES

Registered by Australia Post - 1

Kororoit Ck valuable asset for west

For many Western Suburbs residents, particularly those in Sunshine, Deer Park or Altona, Kororoit Creek is traditionally a dumping ground for old cars or the home of tiger snakes and scotch thistles.

However, historical facts uncovered by experts prove that this unique type of creek formation is a valued asset to the west.

For example the mouth of the Kororoit is part of one of the most important natural bird sanctuaries in the world. Archeologists have identified several old aboriginal camping sites on the creek shores. There are also samples of the earliest European settlement at several points along the creek.

Perhaps most surprising is that part of the Victorian Swimming Championships were held in the Kororoit at Sunshine in the 1930's.

As well as all this, the earliest graziers around Melbourne, from Batman on, took their flocks west. The Kororoit Creek was an important source of fresh water for the early graziers on these treeless plains.

The creek was later to be a barrier to the thousands of diggers on their way to the goldfields. These early travellers crossed the creek at fords which later became places for bridges and hotels as the numbers swelled.

Many of these sites are easily identified as several bluestone bridges still exist and local hotels remain on these original sites. For example the Guiding Star in Brooklyn and the Deer Park Hotel.

The Living Museum of the West has produced a tour

guide map of the Kororoit Creek, sponsored by the Western Region Commission as part of the Commission's Regional Action Program.

The map shows the points and positions of some of these remarkable features and gives references for further reading if you want to

know more about what the West has to offer.

Inquiries about the map can be made at the Living Museum on 689 7293.



Pelican at the mouth of Kororoit Creek in Altona.

THE ADVOCATE, WEDNESDAY 11 FEBRUARY 1987 — PAGE 15

SUNSHINE — WESTERN SUBURBS
Advocate

WEDNESDAY 11 MARCH 1987

Peter finds the West in harmony

AUSTRALIA has more ethnic groups than anywhere else in the world except for Israel.

There are 70 nationalities in the western region and 48 nationalities in Sunshine, Media Co-ordinator for Melbourne's Living Museum of the West, Peter Haffenden, said.

Peter attended an international conference on multiculturalism in New Zealand last year.

People at the conference were staggered at the number of different nationalities living together with so few real problems, Peter said.

"There are personal problems of adaption but no real stress problems between groups in the area," he said.

"No-one can feel a minority because there are so many minority groups you can't feel the odd one out," he said.

Peter said there are no main prejudices between groups. "There are thousands of examples of it but the prejudice does not get out of hand."

He believes this is partly due to Australia's relative wealth. There are no real ghettos here as there are in other countries.

"There are no real racial problems, everybody but everybody has friends from other (ethnic) groups without thinking twice about it," Peter said.

Melbourne's Living Museum of the West "collects the stories and memories of the people of Melbourne's Western Region", the museum's informative brochure says.

The western region comprises nine municipalities: Sunshine, Keilor, Footscray, Werribee, Williamstown, Werribee, Melton, Essendon and Bacchus Marsh.

By MICHELLE FIELD

The stories collected by the museum staff are based on the oral history approach of interviewing people.

"The museum focuses on people, their ideas and memories about local places and events, about life and work in the west," Peter wrote in the brochure.

From the start of his work with the museum, Peter said the Australians in the 22 original museum workers began to see themselves as a different nationality — Anglos.

"It was very relaxing to find we were a minority. We were able to talk about equal rights.

"We no longer had the responsibility of being the majority," Peter said.

In the nine western region municipalities 36 percent of the people were born overseas, which is more than 140,000 people.

When their families are counted there are between 60 and 65 percent of people at least partly influenced by a traditional culture other than the Anglo-Celtic one they find themselves living in, Peter said at the conference.

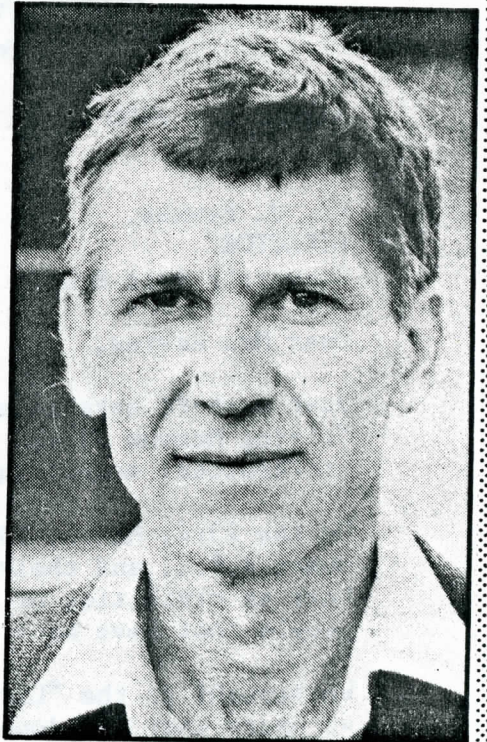
Peter believes another phenomena will occur in the next ten years that nobody has thought about.

"The percentage of overseas born migrants in Australia will decrease in the next ten years," he said.

All children will be brought up in a different culture and a different sort of culture will rise out of this rift, Peter said.

"Everyone will be effected by it," he said.

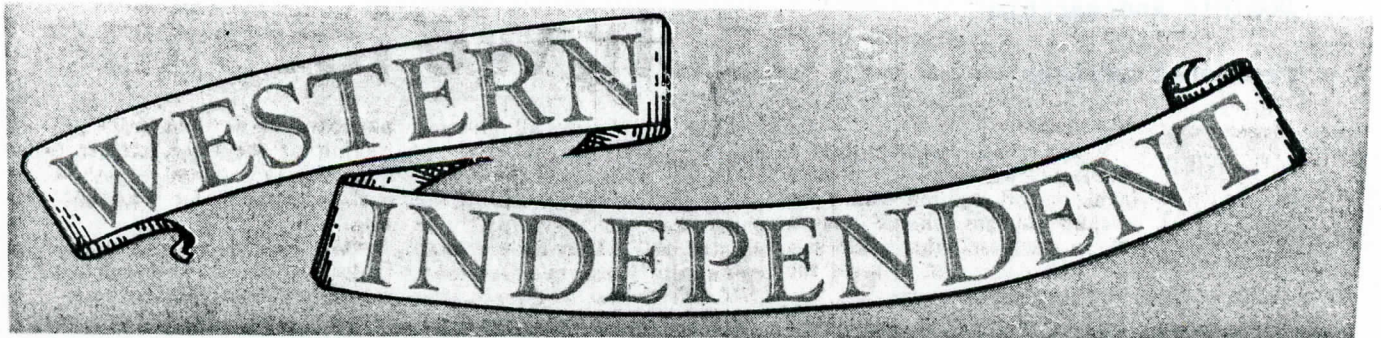
Peter said the western region has been moving at a pace everyone can adapt to.



Peter Haffenden Media Co-ordination of Melbourne's Living Museum of the West.

"The thing about the western region is there has been gradual but slowly consistent growth, especially in the last 30 years," he said.

There is always someone around who can speak your language in the western region which helps to take away the feeling of isolation, Peter said.



HUMES A.R.C.

Humes Limited

528 Ballarat Road, Sunshine
Victoria, 3020
PO Box 44, Sunshine, 3020
Telephone (03) 311 5122 Telex 36504

August 13, 1986

Mr. J. Hawkes,
DIRECTOR
Community Arts Board.

Dear Mr. Hawkes,

Just a short note to express our sincere thanks and praise to the "Living Museum of the West" for their genuine enthusiasm and professional manner in which they assisted with our Historical Display.

On the 23rd, March, 1986, we held an Open Day for all employees of Humes A.R.C. and their families. As part of that day we wanted to have an exhibition of photos about the history of the company and the people that have made the company what it is today.

We brought in the "Living Museum" to help with the exhibition because we heard they had done some similar work and also some study on our industry and on our company specifically.

The photographer at the Museum, Peter Haffenden, helped us produce an exhibition of photos that gave emphasis to the workers in the factory. His personal interest and time spent was most evident in the excellent quality of exhibition put together.

Furthermore this exhibition aired the views and ideas of those who work closely with the heavy steel products we make.

The display gave encouragement to the employees to see their point of view expressed so candidly and provided an interesting focus at the Open Day.

We have maintained contact with the "Living Museum" since, exchanging ideas and assistance in minor ways, and expect to continue doing so in the future.

Yours faithfully,



Dominic Andreacchio

Personnel Officer

DA:TL

SPOTLIGHT ON THE WEST

Vibrant heritage lives on in museum

MELBOURNE'S Living Museum of the West is built on the idea of the ecomuseum, a museum of the total environment, focusing on people and their heritage. It is an ambitious venture in a large, complex, multicultural region of more than 400,000 people in nine municipalities.

The museum began in 1984, with Yunding through Victoria's 150th celebrations and the Community Employment Program. The Victorian Ministry for the Arts has funded a team of core staff with a range of skills to develop the ecomuseum experiment. The growing membership includes several schools and an ever-increasing network of regional contacts. A committee of management has local and government representatives.

Residents of the western suburbs including meatworkers, metal workers, munitions workers, farmers, Colmadal lime-kiln families, artists and homemakers have recorded their experiences, lent photos or helped to arrange tours of the region. Groups of ex-workers from ICI and Sunshine Harvester Works have met regularly over several weeks for "Make History" sessions, funded by TAFE West.

The museum collection, located in its resource centre in Footscray, includes 300 audio-tapes, a photographic archive of more than 12,000

negatives, slides, videos, maps, historical statistics, local publications and displays for loan with text featuring local people's words. Some texts have been translated into the region's main languages.

The collection's computerised catalogue links to Footscray Institute of Technology's pioneering WESTDOC project and students and teachers use the Resource Centre which was staffed in 1986 by a CEP team.

The museum attracts local people who bring in photos to copy or buy books and visitors have come from interstate and overseas.

In two years the museum has produced six books, a calendar, radio programs, greeting cards, brochures, videos, a school kit and seven reports, including studies of historic industrial sites and contributions to a regional heritage study. The Living Museum of the West also presented a big exhibition, 'Chops and Chimneys', at the showgrounds, in May 1985, several smaller exhibitions, organised workshops, reunions, tours and other community events. Some projects are government-funded. 'Duty Nobly Done, Sunshine Harvester in 1987' is the museum's latest product — an informal way of presenting memories of work at Australia's largest agricultural implement works. A museum display, 'History All About You', will be shown at the Williamstown Festival. Displays will

Photo: courtesy Mr



Gelignite workers at Nobels, Deer Park, in the 1930s

be located at regional shopping centres throughout 1987.

The museum looks back to the past and forward to the future. It's about people in the present, in an industrial/rural region with its own beauty



Ms Di Parson from Melbourne's Living Museum interviewing Mrs Connie Robinson, an ex-employee of Sunshine Harvester Works. The interview is taking place on site at Massey Ferguson, Sunshine.

and a diverse heritage. The museum learns from innovative overseas museums, but it is no slavish imitation and draws its strength from the participation of local people.



SHIRE OF BACCHUS MARSH

Certificate of Merit

Awarded to

*Living Museum
of the West*

**BACCHUS MARSH 150TH YEAR
CELEBRATIONS
OCTOBER 17TH - 26TH 1986**

AWARD

*Photography
Details*

*for preparation of
Past Presidents'
Photographic Gallery*

Given on behalf of the Council of the
Shire of Bacchus Marsh and the Bacchus Marsh
150th Year Celebrations Committee

This *26th* day of *October* 1986

R. J. Shields Shire President

A. Arnold Chairman
150th Year
Committee

Paul Morris Shire Secretary

