



ANNUAL REPORT
OF
MELBOURNE'S LIVING MUSEUM OF THE WEST

21 MARCH, 1988

DIRECTOR'S REPORT 1987 - 1988

Melbourne's Living Museum of the West is now four years old. In this year of 1988 we look back at the past and forward to the future. Where have we come from and where are we going?

1984 - 1986

This museum began as a bold imaginative concept, never tried before in Australia - the idea of a museum that is a whole region. We focussed on people rather than objects, and emphasized people's participation in documenting, presenting and sharing the region's heritage. We started through the Community Employment Program with a large, mainly full-time, staff of diverse backgrounds and skills. Victoria's 150th Celebrations enabled us to expand and extend the project, with a base for the first year at Williamstown. Some strands of activity were especially important in the beginning and have continued to this time :-

* oral history program - local people speaking about their working lives, their local history knowledge or their experience of migration.

* photographic and video documentation of people, events and places.

* establishing an archive linked to Footscray Institute of Technology's computerised catalogue system, WESTDOC. This archive contains oral history, photographic material and a range of primary source materials.

* presentation of material back to the local people and to a wider audience, in publications, radio programs, video, exhibitions, community events, including re-unions, seminars, musical performances, art exhibitions, craft demonstrations, festivals.

* work with schools and tertiary institutions.

* documentation of industrial sites which were undergoing great change.

* developing the idea of an ecomuseum.

During these first years we gained publicity in the national press and on television and we presented papers at four national conferences and one international conference. Hundreds of people spoke on tape or lent photos to be copied. Thousands bought our publications. The commitment to focussing on the people and the whole environment of Melbourne's West and on celebrating the cultural diversity of the region was especially evident in the Museum's '*Chops and Chimneys*' exhibition at the Government Pavillion, Melbourne Showground's, in May 1985.

The second and third years saw us based at Footscray, with a smaller staff and several new research and presentation projects. We still retained our commitment to oral history but made greater use of a broad range of sources relating to the region - statistics, maps, industrial archaeology and written sources. We produced a number of reports and expanded our Resource Centre's work. The separate units of the '*Chops and Chimneys*' exhibition went out to libraries and schools as small displays. We developed tours of the region and our first tour brochure. We undertook specific projects for local councils.

1987

In our fourth year of operation we have branched out further in a number of exciting directions. We have found new ways of being a living Museum.

TOURISM

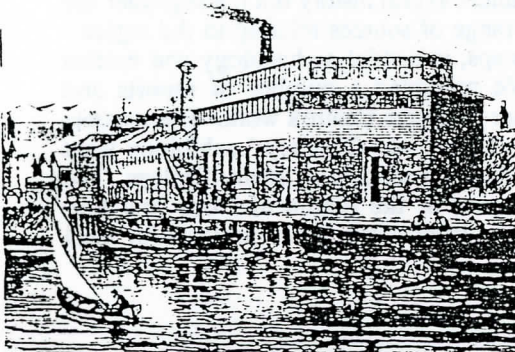
Tourism has been an important concern in the past year. Museum staff attended the "Cultural Tourism" conference organized by the Victorian Tourism Commission. A Heritage/Tourism project funded by the Ministry for Planning & Environment has included the development of three tours and preparation of three tour brochures; the production of posters and the preparation of a Heritage Kit for schools. This project is being undertaken in close co-operation with the Western Region Commission and will be possibly the first concerted effort to encourage people to explore and understand this region, on thematic lines. The Living Museum has now established itself on the ground level in the Commission's efforts to set up a Regional Tourism Strategy. The potential for tourism within the western region holds many future avenues for the Living Museum.

THEATRE

The medium of theatre was used to convey something of the experience of the people of the region, based on material originally collected by the Living Museum. The production - '*Go West Young Woman*' by Time and Motion Theatre, was a tremendous success and most performances were booked out. The theatre experience proved to be a powerful way of conveying some of the thoughts, feelings and experiences of women in our area in World War Two. 1325 people saw the play, live, but many more saw a fragment of the play on ABC Channel 2's '7.30 Report', with Rod Faulkner explaining how the oral history led to the play.

EXPLORE MELBOURNE'S WEST

A Resource Handbook



by
Olwen Ford and Chrisy Dennis
Melbourne's Living Museum of the West

CHAFF-MILLS
IN MELBOURNE'S WEST

Bacchus Marsh has had at least four chaff-mills at one time or another. Pearce Brothers — grocers, produce merchants, farmers, chicory processors, car dealers and chaff-millers — had an interest in three of them. Their first mill was in Church Street from 1886 and was moved to Maddingley in 1908, where part of the original building survives on Maddingley Brown Coal land. MEL: 219 GS.
The fourth mill was at Parwan, constructed by Austral Grain and Produce. Today little remains except a derelict house, even the station was demolished in 1986. MEL: 220 G11.

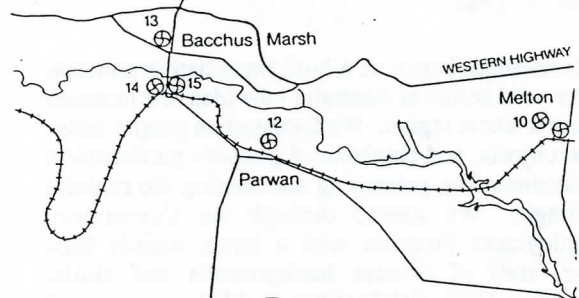
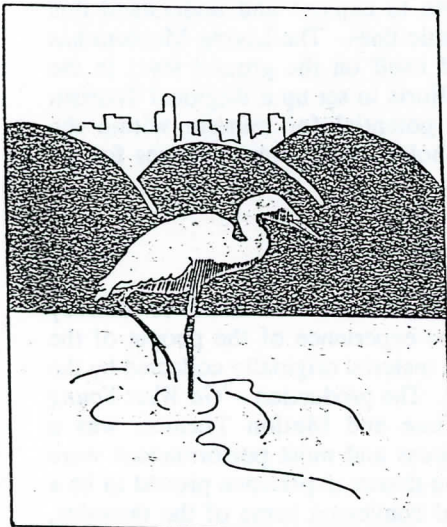


PHOTO: COURTESY BACCHUS MARSH HISTORICAL SOCIETY



Produced by MELBOURNE'S LIVING MUSEUM OF THE WEST 1987
Note: MEL refers to Melways Street Directory (16th edition)

WETLAND EDUCATION & RESEARCH
IN
MELBOURNE'S WESTERN REGION
A PROPOSAL



**THE FIRST RESIDENTS OF
MELBOURNE'S WESTERN REGION**

GARY PRESLAND



PUBLISHED FOR THE FOOTSCRAY CITY COUNCIL AND
THE LIVING MUSEUM OF THE WEST

EXHIBITIONS

Wartime in Melbourne's West

In conjunction with the theatre production, the Museum presented an exhibition combining photography, radio, film, oral history, archival material and artefacts. A 1940 kitchen setting was especially popular. The exhibition conveyed something of the enormous importance of this region in World War Two and its impact on the region and its people. During the latter part of 1987 the exhibitions were a useful resource for schools since the theme of women and work, especially in the World War Two period, is currently a major component in the curriculum of many schools.

Shopping Centre Displays

An out-reach exhibition program was a major thrust of 1987, a series of displays at five of the region's major shopping centres. These were more than static displays since Museum staff and sometimes museum members, were on hand to give out leaflets, sell books, answer questions, accept comments, note down contacts.

Other Displays

Throughout 1987 a range of displays were placed around the region upon request. These have included images of western suburbs women, at Marian College; wetlands display at Altona Petrochemical Company Limited; Angliss Meatworks display at Westend Market as part of the Bicentennial Celebrations. The Museum is currently developing two major exhibitions '*Back in Your Own Backyard*', and '*Getting To Know Kororoit Creek*' which will also include tours, workshops and festivities along the Creek.

WETLANDS EDUCATION SERVICE FEASIBILITY STUDY

This study has brought us closer to an awareness of our region as an area of national and international significance for its birdlife and its wetlands. It has reinforced for us the concept of the ecomuseum, that is, a museum of the total environment, a means of exploring and learning about the natural as well as the cultural world, and the relationship between the two. The proposed Wetlands Education Service in Melbourne's West will especially service student needs, but will also cater for the general public and national and international tourists, while ensuring the preservation of this valuable wildlife heritage so close to urban development. The Living Museum hopes to maintain an involvement with this exciting project.

PUBLICATIONS

Our publications in 1987-1988 are shorter, simpler and cheaper than those produced previously. It is hoped this will make them more widely accessible to the western suburbs' public, and in particular, school students.

- 1) Reprint of text and pictures of 1985 Munitions Diary, *Go West Young Woman*.
- 2) Gary Presland's *The First Residents of Melbourne's Western Region*, in conjunction with Footscray City Council.
- 3) *Explore Melbourne's West*, a resources handbook.
- 4) Brochures on themes in the region's history, including chaff-mills; irrigation; origins of industry; bluestone.
- 5) Broadsheets for schools on aspects or areas of the region, including Aborigines, Altona, The Maribyrnong River Valley; the Humes Site; transport and others.
- 6) Study reports.

RESEARCH

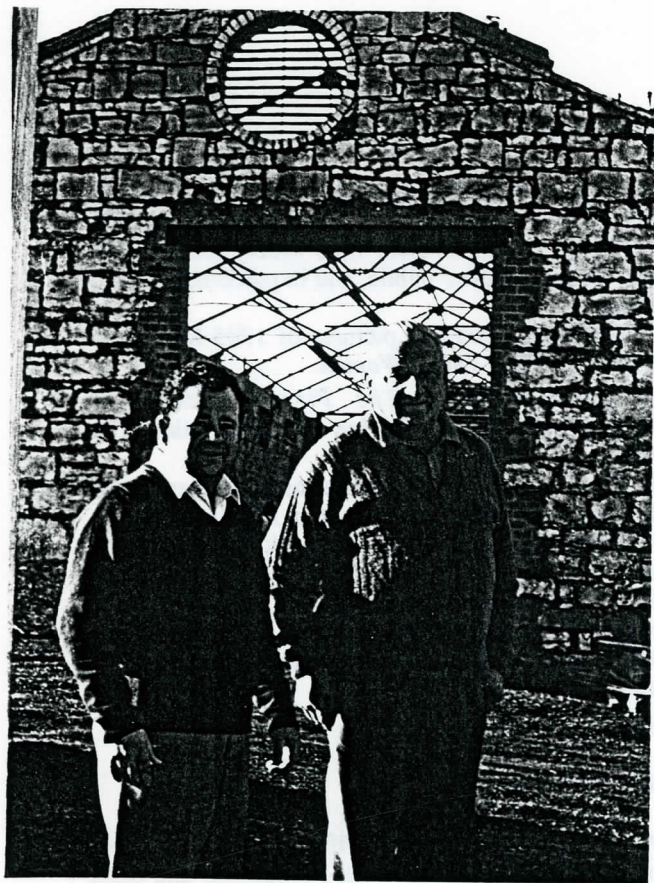
A major research project, in 1987 was the beginning of work on the history of D. Richardson and Sons Ltd., Braybrook. The company have commissioned the Museum to undertake this work which will be continuing during 1988. Richardsons' began in Footscray in 1889 and are a particularly interesting firm in terms of specialization and overseas expansion. A number of Richardsons' workers have contributed their photographs and their story on audio-tape. Research includes work on the context of the metal trades in Melbourne's West and Australia as a whole.

SITE DOCUMENTATION

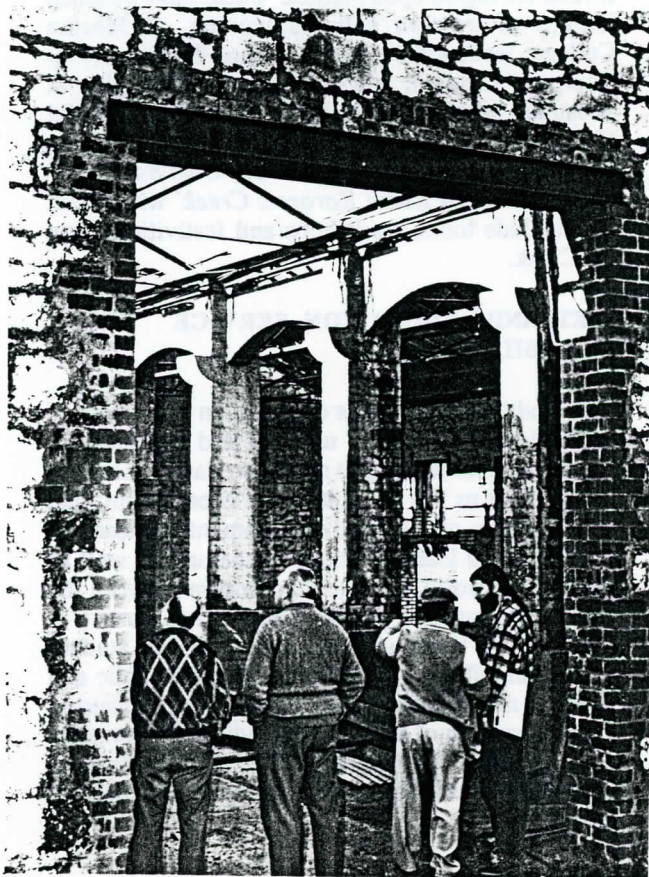
The Museum has contributed to the documentation of major industrial sites - the Humes site, Newmarket, Albion Explosives site, chaff mill sites, bluestone quarries. The knowledge and memories of those who worked on these sites has been an important part of the process. In some cases, the Museum's research and recommendations contribute to future planning and development. For example, its proposals for commemorating the history of the Sunshine Harvester Works, in a major development planned in Sunshine, were presented to the Historic Buildings Council.

REPRESENTATION ACROSS THE REGION

Through representation on committees the Museum also has input to a number of important developments in the region. These committees include Werribee Park and Point Cook Metropolitan Parks Advisory Committee; Friends of the Maribyrnong Valley Committee; Hunt Club



John Caruso and Stan Batista return to their old workplace, Humes.
August 1987



Philip Naimo, Stan Batista and Joe Bonnici explain the old Humes
factory to Gary Vines (Museum staff) August 1987

Community Centre Committee of Management; Humes Bicentennial Project Advisory Committee; the Western Region Commission Arts Advisory Committee; Wested Management Committee.

COMMUNITY EMPLOYMENT PROGRAM

See Appendix 1: C.E.P. Co-ordinator's Report

EDUCATIONAL ACTIVITIES

Educational contacts have included -

- * Visits by Museum staff to talk to students (Lowther Hall, Yarraville West Primary)
- * Discussions with individual teachers who visit the Museum.
- * Advice given in response to telephone enquiries (e.g. Huntingdale Technical School)
- * Assistance given to individual secondary students
- * Discussion of projects with students from F.I.T., P.I.T., R.M.I.T., Victoria College, Melbourne University
- * Sale of books and videos to schools and tertiary institutions (over 100 orders 85 -87)
- * A tour arranged for Euroa High School students (walk and boat-trip)
- * Work experience students (4 in 1987, 1 week each)
- * Contact with Ministry of Education Curriculum Centres and local Support Centres (Footscray and Lincolnville. The co-operation of these centres is very much appreciated. Access to their computer facilities has greatly assisted our educational work.)
- * Participation in a Curriculum Day for Melton/Bacchus Marsh teachers
- * Survey of schools in relation to Wetlands Education Service Feasibility Study (over 200 schools contacted)
- * 'Make History' sessions funded by TAFE West, which involved men who had worked at Humes, Maribyrnong, taking a new look at history and compiling a record of their life and work at the factory
- * Work on a school kit, 'Explore Melbourne's West'
- * Requests from many schools to visit the Museum. Such visits are impossible at present because of lack of space.

A recent statistical survey showed that between 1985 - 1987, the Museum had contact with a total of 211 educational institutions, the total number of contact occurrences being 496. Forty-five schools were contacted regarding the Wartime Exhibition and play, nine schools saw the play and eight schools booked the exhibition. Twelve schools are members of the Museum

FUNDING

To date, the vast majority of Living Museum funds have been supplied by government, both federal and state. Despite the deficiencies and drawbacks of the Community Employment Program, the Museum has benefited enormously from its training

responsibilities. The Victorian Ministry for Planning and Environment and the Ministry for Conservation, Forests and Lands have been valuable funders and have enabled this Museum to more fully explore and present the cultural and natural heritage of the region for all. Since 1986, we have owed a special debt to the Victorian Ministry for the Arts for supporting the idea of a living museum and a museum that is a region. That support has made possible a base from which to branch out and seek more-than-matching funding, and has allowed new projects to build on what has gone before, not operate in isolation. We have had encouraging financial support from sections of the corporate sector - from I.C.I., A.P.C., and D. Richardson and Sons Ltd., and valuable in-kind support from Humes, Laverton.

1988 AND BEYOND

1988 is the cross-roads for this museum. Local good-will and enthusiasm has often been expressed but now major financial backing is needed to secure our future survival. Some of this support could be directed to particular projects but what is urgently required is a financial commitment to the over-all concept, the organization itself and all it has to offer.

A FUNDING PROPOSAL

Living Museum staff are currently confronting this financial requirement. A major funding package is being prepared, at the heart of which will be a Living Museum benevolent trust fund. Key industries and other sources will be approached to contribute substantial donations to this fund, the interest from which will finance core activities, such as the operations of the Resource Centre and the development of further exhibitions, as well as other Museum-related activities and facilities. The Museum *must* move toward increased financial independence if it is to continue in the service of the people and environment of Melbourne's west. When prepared, the funding package will propose specific reasons for financing particular aspects of the Museum's operations. These reasons may include free publicity in conjunction with community services or events, the provision of rooms for meetings, a place to bring international visitors etc. Further options will also be explored. However, for the funding proposals to work appropriately, two considerations must be maintained at all times:-

1) The Museum must retain its operational independence. At no time will the requirements of funding and the allegiance to private funders be allowed to obscure the Living Museum's original Aims and Objectives, or deter it from acting in the sole interests of the people and environment of Melbourne's west and their heritage.

2) The Living Museum *must* occupy a high-quality, high-profile permanent home or homes, from which services, publicity and on-going

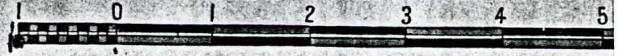
PROPOSED HEADQUARTERS OF MELBOURNE'S LIVING MUSEUM OF THE WEST INCORPORATED



LEGEND

- ROADS & STREETS ... [Symbol]
 - AUSTRALIAN NATIONAL ROUTE NUMBER ... [Symbol]
 - TRAMWAY (With Route Number) ... [Symbol]
 - RAILWAY ... [Symbol]
- Distance in kilometers
From G.P.O.

SCALE OF KILOMETRES



With acknowledgement to Broadbents Melbourne To and Fr

community contact may be maintained. *This is not to infer that the Museum will downgrade its activities across the region. We believe that a permanent home, easily identifiable, will make the Museum's work better known throughout the region.*

A PERMANENT BASE

A permanent base will allow the Living Museum to plan for future activities and expansion in a co-ordinated manner. A high-profile base with a range of facilities to service the public has the potential to attract further funding, especially corporate sponsorship. It is envisaged the Humes Site on the Maribyrnong River, owned by the Boards of Works, will fulfill these needs.

The Humes Site has enormous potential. It is a major urban-renewal project with \$2m Bicentennial funding. It is on the inner periphery of the region, close to four of the nine municipalities in which the Museum operates, and near three main-road arteries of the region. It links into boat tours along the Maribyrnong, having its own wharf, and is part of a major linear park development which is revitalising the River Valley. Apart from the Museum's occupation of buildings on the site, the Park will become a major urban public open space. It has exciting educational and tourism opportunities. It is virtually at the centre of a huge Ministry of Education region, servicing 400 schools, in the Western, Northern and inner suburbs of Melbourne. Other Board of Works parks such as Brimbank and Werribee Parks, attract around 300,000 visitors each, per year. With eighteen hectares of parkland within an inner urban environment, the Board expects the Humes Site to attract similar visitor levels. This will greatly enhance the Museum's general public visibility.

The cathedral-like enclosed space of the Site's main bluestone buildings offer unique venues for community activities, including exhibitions, concerts, theatre, meetings, etc.

Working towards a permanent base at the Humes Site, Maribyrnong, the Museum has designed and proposed history trails and a nature trail for the new park; assisted artists commissioned by the Board for the project; worked on a draft legal agreement with the M.M.B.W., liaised with architects and builders over the Museum's requirements within the Visitors Centre, and explored the site's potential as a base for exploring the western suburbs and its past.

The Living Museum will provide interpretation facilities relating to the Humes Site. However, the potential of the site as a vehicle for interpreting the western suburbs as a whole is its real value to the Museum. It will provide an impressive starting-

point for investigating the following important features of the region:-

- 1) Industry
- 2) Pastoral activities
- 3) 19th and 20th Century technological innovations
- 4) Pollution
- 5) Work and worker history
- 6) History of migration and migrant workers
- 7) Bluestone and architectural/building history
- 8) Wetlands and bird life
- 9) Transport
- 10) Irrigation

Occupancy of the Humes Site will thus be a means of raising awareness of the region, its heritage and its significance within national and international contexts.

The site, incorporating Museum offices, display space and Resource Centre, will be the beginning or terminus for regional tours by bus and by boat. Also, as the Living Museum will remain a museum of the total environment, it will not be circumscribed by themes only relevant to the Humes Site. It will continue to operate throughout the community across a broad range of topics for which there are educational, cultural and tourism needs.

The Living Museum of the West's occupation of the Humes Site cannot be viewed as incidental to its overall operations, or the move will merely fragment its activities and the site will fail to achieve full potential for the Museum and the region. The site must be integrated into the Museum's notion of an "ecomuseum" which aims to serve and interpret the whole of Melbourne's western suburbs. The site will assist the Museum in its work of expanding the parameters of museum activity in Victoria and Australia.

REVIEW

A Review sub-committee of the Museums Advisory Board recently reviewed the Museum's work. Their comments, especially those on the Museum's impact, its educational links, future financing and a permanent base, present an important challenge to this Museum. Their phrase, 'the Mighty West', could well catch on as an apt description of our region.

THANKS

Our thanks go to our major supporters - the following three Ministries - Arts; Planning and Environment; Conservation, Forests and Lands; regional sources such as the Western Region Commission, Footscray Institute of Technology, Wested; local people, members, the Committee of Management and the Museum's hard-working staff.

The coming year will bring to the Living Museum its greatest tests. Much needs to be achieved, but the Museum's impact since July 1984 provides an excellent footing on which to expand further. The Living Museum of the West is by and for the people of Melbourne's west. On their behalf we seek your support and best wishes for every success in this exciting venture.

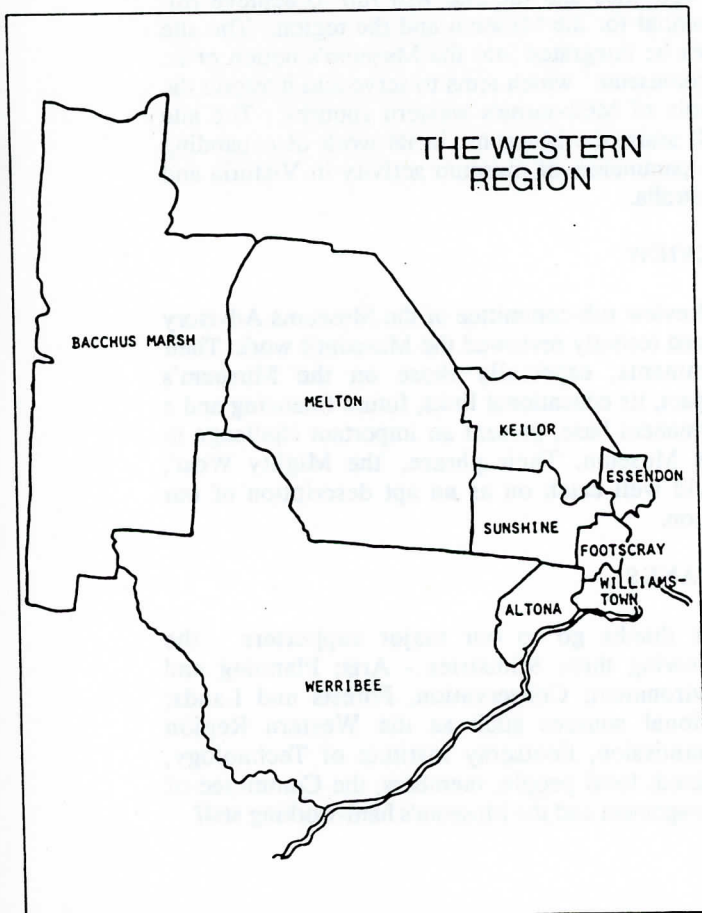
Olwen Ford
MUSEUM DIRECTOR.

MUSEUM STAFF 1987

Olwen Ford : Museum Director
 Rod Faulkner : Assistant Director
 Peter Haffenden : Media Co-ordinator
 Mark Dawkins : Finance Officer
 Gary Vines : Researcher and Industrial Archeologist
 Dianne Parsons : Researcher and writer
 C.E.P. Team : Chrisy Dennis* : Co-ordinator; Tran van Be; Anna-Maria Philippoussis; Elizabeth Wyatt; Robert Ricaldone
 * Chrisy Dennis is now working with the Museum on particular projects and is Publications Manager.
 Brett Lane worked with the Museum as a consultant for the Wetlands Educations Service Feasibility Study.

The purposes for which Melbourne's Living Museum of the West Incorporated is established are:—

1. To establish a permanent ecomuseum within the context of Melbourne's Western Region, a concept whereby the total community, its environment and its heritage are considered as part of the Museum, focussing the main emphasis on the people of the region rather than on artefacts, and operating from one or more fixed bases throughout the region.
2. To develop a greater understanding of the history and culture of Aboriginal and non-Aboriginal peoples and the environment of Melbourne's Western Region.
3. To record and present the history of working people in Melbourne's Western Region, up to the present day.
4. To involve the people of the region in the collection, research and presentation of this history.
5. To use a wide range of presentation methods, including exhibitions, video, publications, theatre, public events, and other participatory activities.
6. To be a multi-cultural museum.
7. To create a mobile museum service for Melbourne's Western Region.
8. To relate the historic sites and structures of the region to the story of the people of the region.
9. To develop a Heritage Resource Centre for the region.
10. To undertake linking and bridging activities with other groups, projects and institutions in the Western Region.
11. To act as a catalyst to development of ecomuseum activity in Australia.
12. To develop and promote community museum activity which is interactive and innovative.
13. To develop the techniques of presenting exhibitions and related activities as effective communication devices.
14. To undertake pilot projects in a number of areas within the ecomuseum context on an experimental basis.



APPENDIX 1:

C.E.P. CO-ORDINATOR'S REPORT

The Living Museum's 1987 - 88 C.E.P. Project employed a co-ordinator and 4 people who had been out of work for at least 9 months. The group had a variety of ethnic backgrounds - Jugoslav, Vietnamese, Italian and Anglo-Australian. Their ages ranged from 21 to 43. These people already had a variety of skills that were improved and added to in the course of the program which ran from June 87 to February 88.

This publicity project aimed at raising community awareness of the whole region and of the people in it. It included promoting cultural events, presenting information about the living museum to the community and extending and documenting the Living Museum's contact with schools. I will give some examples of how the publicity team achieved this aim. All of the team helped in the distribution of promotional material for the play 'Go West Young Woman', and in taking bookings and as front of house workers. Anna and Robert attended a Tourism Workshop at F.I.T. with Olwen where they shared information about the Living Museum's production of regional tourist brochures, posters and school kits. The team helped to staff the Wartime exhibition which ran concurrently with the play. They were also responsible for delivery and collection of the Wartime Exhibition to local schools. All of the team were involved in the production of the September and December Newsletters. Museum brochures on the resource centre, publications, exhibitions and videos have been prepared by the C.E.P. team. The brochures are available to members and are being distributed through community stalls and exhibitions. We were able to share the tasks involved in staging the launch of Le van Tai's book 'Empty Arms Surrounded by Warm Breath.' and exhibition of his paintings. The team conducted an information stall at the 1988 Salt Water River Festival.

Our publicity team contributed to the work done on several projects, as well as general museum work. A new electric typewriter, with word-processing functions, was bought, partly with C.E.P. funds. It is now linked to the computer and can be used as a better quality printer. There was a large amount of typing, filing and other general office work done by the publicity team. One C.E.P. worker learned bookkeeping. He took over the job while the Living Museum's finance officer was away for 2 weeks holiday, and then helped to computerise the book-keeping for this financial year. The photographic work done by two members of the team was much appreciated and it will be used in future publications and exhibitions.

The staff at the Living Museum put a great deal of effort into training the 4 people on the C.E.P. team. Our aim was that they would be more employable at the end of the project and that they should have more confidence in their own abilities. Each member of the team had their own particular training needs and these issues addressed as much as was possible, given the constraints of time and funding. We believe that the program was successful in that all of the people have gone on to do what they wanted to do. One of the women has been accepted into a Primary Teachers course, after 2 previously unsuccessful applications for a place at F.I.T. and the Mercy College; one of the men has found a permanent, full-time job as a teachers aide in a Technical School and has enrolled in a part-time Library Studies Course; the other man clarified for himself, his wish to pursue his career as a painter, full time; and the remaining woman saved enough money to travel.

The Living Museum and the C.E.P. workers benefited by the publicity project and it is regrettable that such projects will no longer be funded by the Federal Government.

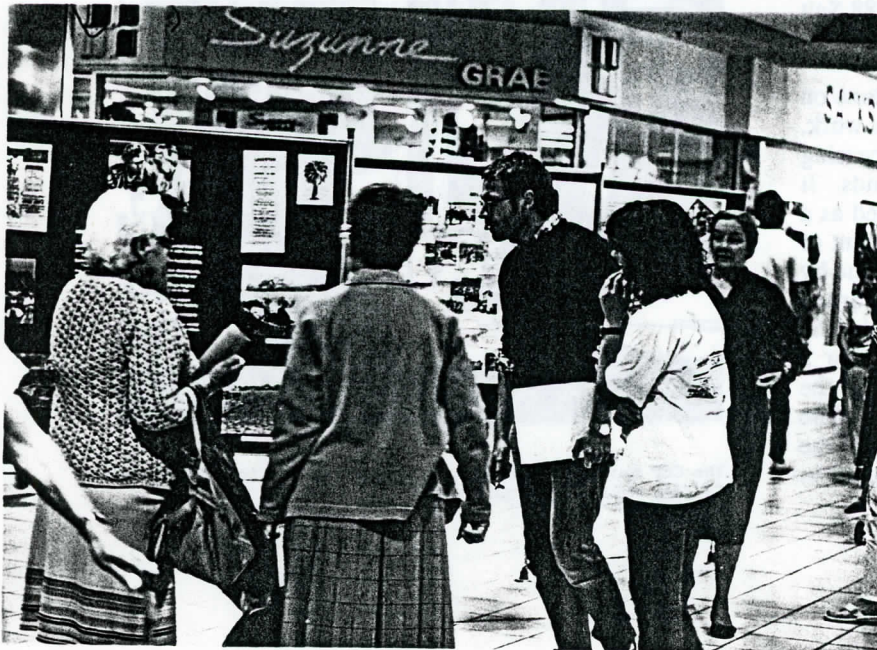
Chrisy Dennis, C.E.P. Co-ordinator.



The CEP team help prepare the Wartime exhibition, Marie Mill Centre, Maribyrnong, July 1987



*
 Responses to a Museum display
 Westend Market, Sunshine
 "We Salute You Malta" Festival
 January 1988



Shoppers and Museum staff at a Museum
 display at Highpoint, 1987.

APPENDIX 2:

EXHIBITIONS, MARCH 1987 - MARCH 1988

Shopping Centres

Twenty-one separate deliveries of one-day exhibitions on a variety of local historical themes, delivered to Highpoint City; Altona Gate; Werribee Plaza; Melton Regional Shopping Centre and Sunshine Plaza, from March - June, 1987.

Wartime Exhibition

13-18 July 1987, Marie Mill Community Centre, Maribyrnong
20-26 July 1987, Footscray Community Arts Centre
5-12 Aug 1987, Sunshine Technical School
13-19 Aug 1987, Catholic Regional College, Sydenham
21 Aug - 3 Sept 1987, Catholic Regional College, North Keilor
10-16 Sept 1987, Altona City Council
5-9 Oct 1987, Laverton High School
12-16 Oct 1987, Paisley High School, Altona
19-30 Oct 1987, Deer Park High School
16-19 Nov 1987, Keilor Heights High School
26-27 Nov 1987, History Teachers Assoc. Conference
4-10 Dec 1987, Keilor Downs Post-Primary School
19 Mar 1988, Oral History Association Annual Meeting, Living Museum Offices

Festivals

11-12 April 1987, Heritage Week, Living Museum Offices
6-8 June 1987, Multicultural Sunshine, Westend Market
16-17 Jan 1988, Maltese Festival Day, Westend Market
23-24 Jan 1988, Greek Festival Day, Westend Market
23-25 Jan 1988, Williamstown Summer Festival
27 Jan 1988, All Nations Day, Footscray Park
10 Feb 1988, Saltwater River Festival, the Mall, Footscray

Other

5-8 June 1987, Wetlands display, Altona Petrochemical Complex
27 April - 8 May 1987, Footscray TAFE Library
23 Oct - 6 Nov 1987, Hunt Club, Deer Park - Le van Tai paintings
25-26 Oct, Western Institute Open Day - Multi-cultural display
22 Nov 1987, Humes Site
9-13 Nov 1987, Loan of boards only to Sunshine Technical School
30 Nov - 3 Dec 1987, Loan of boards only to Sunshine Technical School, used at Sunshine Plaza
26-29 Feb 1988, Catholic Regional College, Sydenham

TOTAL: **145 full days of exhibitions**
 on 48 different occasions
 at 26 different western suburbs venues

Fig. 1 Origins of enquiries represented as percentage of overall enquiries.

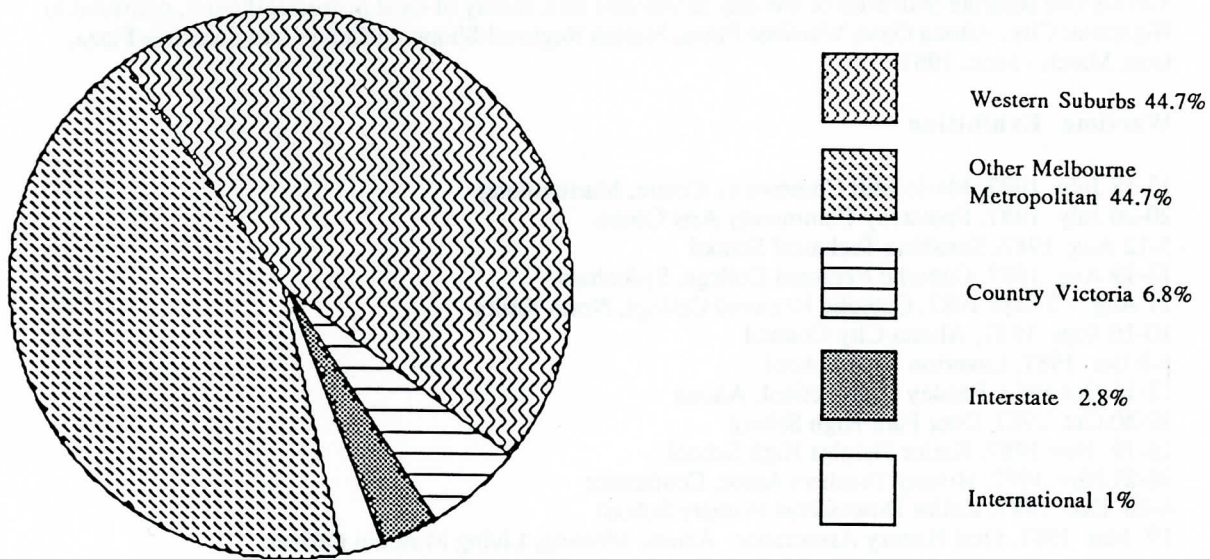
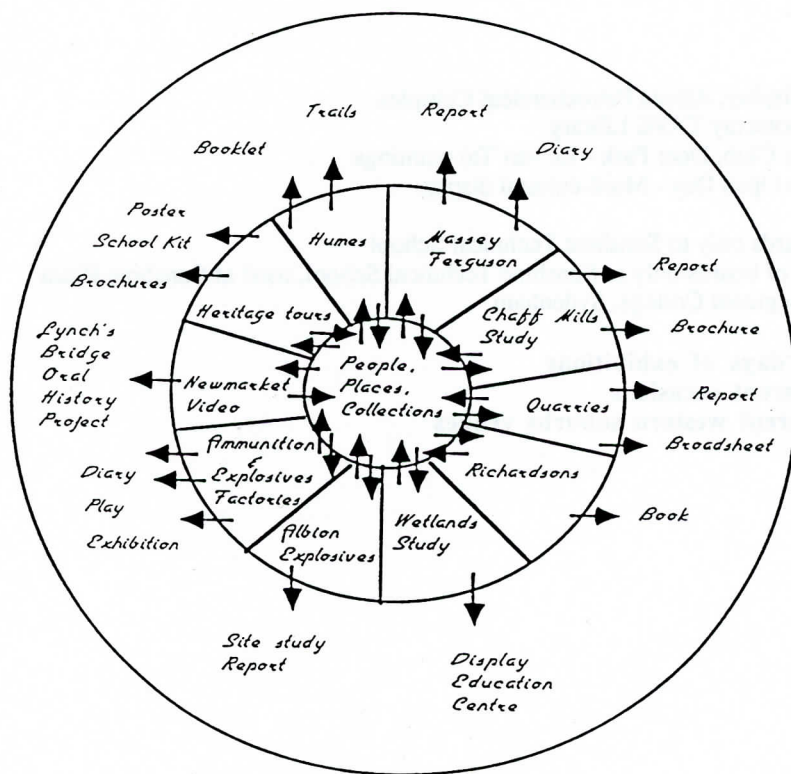


Fig. 2. The Resource Centre as the Power House of the Living Museum of the West.



THE RESOURCE CENTRE IN THE PAST AND IN THE FUTURE

Melbourne's Living Museum of the West has a valuable collection of artifacts, photographic negatives, painting, audio-tapes, transcripts, videos, archival material, books, exhibitions and displays - all relating to the history and environment of Melbourne's western region. This material has for the most part been generated locally, i.e. by the Museum itself or provided by local people. It is currently housed in rented premises at 14 David Street, Footscray.

When the Museum began in June 1984, the material generated by the initial researchers had to be catalogued and indexed for proper storage and easy retrieval. A part-time archivist was employed for one year to design and develop the Resource Centre. From June to December 1986, the Resource Centre was funded by a C.E.P. project employing five people.

At all other times the Resource Centre has been without a full-time staff member or appropriate funding levels. The Museum has qualified staff to professionally service the Resource Centre, but the diversity of Museum activities has prevented any commitment to the Centre's co-ordinated expansion. At the same time a backlog of archival material awaiting accessioning and indexing continues to grow.

The urgent need to increase Museum commitment toward the care of its archives is evident in the recognition it has already gained as an important resource in the ongoing study of Australian history, especially the history of work in Australia; and the history of multi-cultural Australia. The Museum's Resource Centre has had visitors from all parts of the region, and the metropolis, from country areas, interstate and overseas. Its significance is indicated by its inclusion in two national reviews of repositories and collections conducted by the Committee to Review Australian Studies in Tertiary Education, 1987.

Throughout its operations the Resource Centre has maintained strong links with Footscray Institute of Technology Library's computerised bibliographic data base on Melbourne's west - WESTDOC, itself a pioneer bibliographic project now being copied on the other side of Melbourne (EASTDOC). Much of the Museum's material is already on this computer catalogue and is included in WESTDOC's published catalogue, Volumes 2-3.

The Resource Centre has finally outgrown its meagre space and facilities at 14 David Street. It is hoped the future move to the Visitors Centre at the Humes Site on the Maribyrnong River will provide appropriate storage/access space and facilities. Ideally, such space should allow private researchers

to study in quiet and at the same time provide access for larger groups, such as school classes.

The Resource Centre urgently requires:-

- a permanent home with proper accommodation for its Collection, room for future expansion and facilities for public access, especially for schools and tertiary students;
- on-going funding to provide (a) the salary of a full-time curator/registrars, and (b) materials and equipment for proper care and storage of the collection;
- additional staff, paid or volunteer, to develop the Museum's register of historic sites and to extend the work of cataloguing artifacts in the region along the lines of the SAMDOK contemporary documentation project in Sweden;
- publicity and promotion at a regional and metropolitan level so that the work of the Resource Centre becomes more widely recognised.

The Resource Centre collection is the power house of the Museum, the link between past, present and future research, documentation and presentation. The collection has been a resource for much valuable work in the last three years and has the potential to assist and generate exciting new work in the future.

Public Use of the Resource Centre, 1987

Two hundred and twenty-two registered visits, requests and/or enquiries were directed toward the Living Museum's Resource Centre from March 1987 to March 1988. This total excludes requests for display materials or exhibition bookings. It also excludes all internal requests from Museum project workers and Time and Motion Theatre workers.

Visits and enquiries in 1987 included:-

- supplying multi-cultural audio material for the Bicentennial Touring Exhibition;
- supplying negatives of people at work in the west for the Museum of Victoria's exhibition, "Another Day, Another Dollar";
- assisting the Museum of Victoria's Photographic Archive Project with its first outreach into the metropolitan region, aimed at Footscray;
- sales of publications to the University of Calgary, Canada.

Extracts from national reports

1. from *CRASTE Paper No 17 RESOURCE CENTRES* by Peter Robinson and Ian McShane, Committee to Review Australian Studies in Tertiary Education, Canberra, February, 1987, pp. 51-53

7. *Melbourne's Living Museum of the West - Footscray.*

This organisation is discussed in the paper on museums, but as a regional resource centre model it provides us with some unique insights into the identification and description of study resources, for a variety of disciplines, which are located in a small geographical area...

The earliest projects of LMW were the recording of oral histories of residents and the collection and indexing of photographs. LMW sought to record people who could talk shop not simply reminisce about their lives. There has since been a move away from oral history to a broader program of historical research. A number of projects have had a multi-media format - photograph, video, audio, map, document. There have also been some bi- or multi-lingual projects. LMW has a vigorous publication program. Some of this is essentially a promotional venture but some publications are finding unexpected audiences. An account of the experiences of Vietnamese migrants, published in English and Vietnamese, supplements the standard text in the Footscray TAFE's English as a Second Language course for Vietnamese. Inquiries from overseas have been received about this book. The Preston Institute of Technology has used LMW as a resource for teaching the history of welfare to its social welfare students. Footscray Institute of Technology and University of Melbourne students have also made use of LMW...

Most of the LMW photograph, tape and video collection has been catalogued and placed on WESTDOC, a data base of information sources on the Western region. Artefacts and buildings assessed and indexed by LMW have also been described on WESTDOC...

The emphasis that LMW has placed on describing the changing industrial climate of the region has relevance for the teaching of Australian studies through the culture of work. LMW represents the closest approximation to a resource centre through which this theme can be pursued in the teaching of Australian studies. The description of the study resources- art, artefact, oral, text, site - pertaining to the region on the WESTDOC data base demonstrates the feasibility of such a centre.

2. from *CRASTE Paper No 19 ARCHIVES AND MUSEUMS* by Ian McShane, Committee to Review Australian Studies in Tertiary Educations, Canberra, April, 1987, p. 62

The broader considerations of learning from the surrounding physical and cultural environment have been examined by a number of commentators, perhaps most thoroughly by Jeans and Spearritt.¹⁸ Elsewhere Spearritt has argued that too many Australian museums display objects removed from the surrounding historical context. The desire to reconstruct the context has led to catch-all social-historical interpretations providing context for technological or fine art exhibitions. Spearritt argues that museums should not attempt to replicate

aspects of the cultural landscape that are still best observed in situ.¹⁹

From these concerns was developed the concept of the "ecomuseum", a French concept which interprets and presents the cultural heritage of a region in situ rather than collecting and conserving artefacts in a central location, is gaining acceptance in Australia. The concept is one where the total community, environment and heritage are considered part of the museum, and displays and presentation involve participation by the community. Theatre, travelling exhibitions, community celebrations and reunions all come within the definition of display. The ecomuseum has a central administrative and research staff, and its effective operation relies upon building a database of resources, sites, artefacts, pictorial, oral and documentary material within the region.

Melbourne's Living Museum of the West (LMW) is an example of such a concept. LMW was established by a planning committee composed of members of the Western Region Commission, Ministry of Planning and Environment, local councillors and community members. LMW had its genesis in acceptance that the west of Melbourne was disadvantaged in educational resources, yet had a unique heritage and a strong sense of community. LMW identified two predominant characteristics of the region - industry and migration - and developed these as the twin themes of the museum. Projects and displays have concentrated on industrial development and decline, and the experience of migrants.



Mr.T.Shone and Dianne Parsons outside the Museum's head-quarters, 14,David Street, March 1987

APPENDIX 4:

VIDEO AND RADIO 1984 - 7

VIDEO 1984 - 87

Chops and Chimneys: An overview of an exhibition/festival of Melbourne's western region held in May 1985 at the Royal Melbourne Showground

Kororoit Creek: A journey down the Kororoit Creek, exploring the changes the Creek has seen, from Aboriginal occupation.

Living Museum of the West: A summary of the Museum's activities in 1984 - 85 presented for the Museum of the Year Award, awarded to the Living Museum of the West in 1985 (14 mins)

With a Song in My Kazoo: A historical look at the bands of Melbourne's western region.

A Galah Event: Community Theatre presented by WEST Theatre and the tenants of Aitken Street Housing Commission Flats in Williamstown, at Williamstown Festival, 1985.

I'll Bake You a Plate: China painting by western suburbs artist, Joyce Austin.

Under The Peppercorns: Newmarket Salesyards at work with a look at its history.

Living Museum: An impression of the Museum in 1987, produced by free-lance journalist Pamela Trustrum.

Go West Young Woman: The 1987 production by Time and Motion Theatre focussing on the lives of women munition workers in Melbourne's West in World War Two.

Multi-cultural Elderly Citizens Day, Footscray: Documentation of an important event which involved hundreds of senior citizens from a number of different ethnic backgrounds. Note: The Commonwealth Office for the Aged have seen some of this video footage and have recommended it be used by the newly-developing Migrant Resource Centre in Hobart, as a valuable source for their work with the elderly from many different ethnic backgrounds.

M.M.B.W. use of footage

Video footage by Museum staff has been used as an information source for a special operations team formed by the M.M.B.W. after the famous Butler fire in West Melbourne, and for a Science Conference held in Melbourne.

Public Television

The granting of a licence for a public television group, Television Unlimited, will mean some of the Museum's videos will probably go on air in June 1988. This will extend the reach of the Museum within and beyond the region.

RADIO 1987 - 8

The Museum has continued links with 3WRB and has assisted in training sessions. Work is in progress on programs to be broadcast when 3WRB takes to air in June 1988. 3CR has re-broadcast the 'Lifblood of Footscray' radio programs. The Museum contributed to a test broadcast by the local broadcasting station at Bacchus Marsh.

PAYMENTS MADE TO THE MUSEUM 1987

(Grants and fees for service)

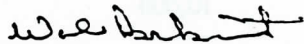
Victorian Ministry for the Arts	\$80,000
Commonwealth Community Employment Program	\$58,630
Victorian Ministry for Planning & Environment	\$29,887
i) In association with Western Region Commission	
Kororoit Creek brochure (balance)	\$1,987
Massey Ferguson Site Study (bal)	\$980
Heritage/Tourism project	\$15,000
ii) Consultancy: Albion Explosives	\$2,000
Victorian Ministry for Conservation, Forests & Lands	\$16,960
Wetlands Education Service Study	\$10,000
Broadsheets	\$5,000
Lynch's Bridge project (Newmarket)	\$1,960
TAFE WEST 'Make History' sessions	\$900
Bicentennial Environment Program	\$7,500
Bicentennial Commissioning Program	\$3,250
Bacchus Marsh Shire Council (Photographic gallery)	\$4,460
Footscray City Council (CEP Tannery Reserve Video)	\$2,000
D. Richardson & Sons Ltd (Commissioned history)	\$11,250
Time & Motion Theatre Income from Myer, Reichstein, Community Arts Board Sunshine Council & Community Arts Resource Centre	\$14,650
BOX OFFICE	\$3,379
OTHER	\$469
TOTAL GRANTS	\$233,335
	=====
OTHER INCOME	
MEMBERSHIP	\$885
SALE OF PUBLICATIONS	\$2,659
DONATIONS	\$1,258
INTEREST	\$4,214
SUNDRY RECEIPTS	\$964
	<u>\$9,980</u>
<u>TOTAL INCOME 1987</u>	\$243,315
	=====

AUDITOR'S REPORT

To the Members of the

Melbourne's Living Museum of the West Incorporated,

In my opinion the accompanying statements, being the Balance Sheet, the Profit and Loss Statement, and the Source and Application of Funds Statement, have been properly drawn up so as to give a true and fair view of the financial position of the Museum at 30th June 1987 and of the state of its various grant disbursements for the year then ended.



Wol Borkut, AASA-CPA,
Auditor.

4th January, 1988.

MLM

MELBOURNE'S LIVING MUSEUM OF THE WEST Incorporated

BALANCE SHEET
As at 30th June, 1987

PRIOR
PERIOD
\$

\$ \$

TRUST FUND

8,483	Grants Not Spent From This Year	1,588	
47,539	Accumulated Surplus	56,022	
-	Grants in Progress not Surplus -Adj.	(26,651)	
-	Grants Not Spent From Previous Year	26,651	
<u>56,022</u>			57,610
<u>56,022</u>	TOTAL TRUST FUNDS		<u>57,610</u>

REPRESENTED BY:-

209	Cash at Bank	17,333	
-	Cash at Bank - C.E.P. Grant	6,874	
2,268	Savings Account - National Australia	12	
27,000	Savings Account for CEP Grant	-	
4,905	Stock of Publications (at cost)	5,609	
-	Term Deposit	10,000	
<u>34,382</u>	TOTAL CURRENT ASSETS		<u>39,828</u>
34,382	WORKING CAPITAL		39,828

FIXED ASSETS

27,051	Office Machines	29,371	
(5,411)	Provision for Depreciation	(11,589)	
<u>21,640</u>	TOTAL FIXED ASSETS		<u>17,782</u>
<u>56,022</u>	NET ASSETS		<u>57,610</u>

MLM

MELBOURNE'S LIVING MUSEUM OF THE WEST Incorporated

PROFIT & LOSS ACCOUNT

For the Year Ended 30th JUNE, 1987

PRIOR
PERIOD
\$

		\$	\$
	INCOME		
161,425	Various Grants		200,511
10,038	Sales of Publications		5,113
3,446	Sundry Receipts		3,280
3,335	Interest received		6,327
241	Donations		1,005
3,306	Membership Fees		1,320
27,000	CEP Grant (unused at balance date)		-
<u>208,791</u>	TOTAL INCOME		<u>217,556</u>
	LESS EXPENSES		
160	Accountancy fees		600
1,097	Advertising and Promotion		933
420	Audit Fees		945
457	Bank Account Charges (Government)		492
-	Commission		98
5,411	Depreciation		6,178
5,975	Exhibition Expenses		1,350
1,870	Hire of Equipment		1,879
959	Hire of Venues		2,872
-	Insurance - General		1,520
1,377	Insurance - Workcare		2,785
7,293	Consulting Fees		1,075
1,739	Postages		879
12,450	Printing and Publication Expenses		9,310
1,111	Power and Light		1,399
	Repairs & Replacements :-		
594	Office Machines	470	
<u>594</u>		<u>470</u>	
143,106	Salaries		470
665	Sundry Expenses		164,595
10,620	Stationery and Office Supplies		970
1,140	Seminars/Training - Employees		11,365
1,003	Telephone		2,003
2,861	Travelling		1,014
			3,236
<u>200,308</u>	TOTAL EXPENSES		<u>215,968</u>
<u>8,483</u>	UNSPENT GRANTS carried forward		<u>1,588</u>

MLM

MELBOURNE'S LIVING MUSEUM OF THE WEST Incorporated

SOURCE AND APPLICATION OF FUNDS STATEMENT

FOR THE YEAR ENDED 30th JUNE, 1987.

DURING THE YEAR FUNDS WERE MADE AVAILABLE FROM:-

Unspent Grants carried forward	1,588	
ADD Charge note absorbing Cash - Depreciation	6,178	
	<u> </u>	
		7,766
Decrease in Savings Account - National Australia		2,256
Decrease in Savings Account for CEP Grant		27,000
		<u> </u>
		<u>37,022</u>

AND APPLIED IN THE FOLLOWING MANNER:-

Capital Expenditure -		
Personal Computer	2,320	
	<u> </u>	
		2,320
Increase in Cash at Bank		17,124
Increase in Cash at Bank - C.E.P. Grant		6,874
Increase in Stock of Publications (at cost)		704
Increase in Term Deposit		10,000
		<u> </u>
		<u>37,022</u>



Newmarket Saleyards gone but not forgotten

NO, these sheep are not waiting to vote in Saturday's Federal elections.

They were awaiting a fate worse than that.

In March this year another page was turned in the history of the western suburbs, when the last livestock sale was held at the Newmarket Saleyards... just across the river.

The markets, associated abattoirs and meat industries are already fading memories as the State Government sets about redeveloping the sites for private and public housing, recreation, tourism and open spaces.

Selected sites and buildings of historical

significance will also be retained and conserved.

The northern end of the site housed the Newmarket Saleyards, known as the Doutta Galla Livestock Market in 1856 and were privately leased in the early days until the Melbourne Council took it over in 1898.

Many old-timers will remember stock losing their way and ending up in local shops and hotels in the days when sheep and cattle were brought in by rail and herded along Newmarket St. Road transport took over in the 1950s.

Soon after the Newmarket Saleyards began operating, the Melbourne Council

established an abattoir between Epsom Rd and the Maribyrnong River. Retail butchers leased facilities there to slaughter their own stock or used contracting firms to supply meat to their shops.

During their 130 years of operation, the meat industries of Footscray, Flemington and Kensington employed thousands of local people. Their role will be recognised and commemorated by the retention and restoration of some of the buildings and fixtures on the Newmarket and abattoirs sites.

Some of the Newmarket stockpens will be retained, along with the 110-year-old Newmarket administration

building. Three of the slaughterhouses on the abattoirs site will also be recycled.

At the same time, the Living Museum of the West is compiling a history of the markets and abattoirs so that Newmarket's past won't be lost to future generations.

Western suburbs people who wish to share their memories of working at Newmarket or the old City Abattoirs, or who have old documents or photographs of the site are urged to contact Gary Vines, who is collating the history. He can be contacted at the Living Museum of the West, 14 David St, Footscray. Phone: 689-7293.

The Western Times, Wednesday, July 8, 1987-



● Artist and poet Le Van Tai adds finishing touches to his work yesterday.

The Sun Oct 24th

Empty arms carry plenty of talent

LE Van Tai, of Footscray, was paid \$300 for the 37 words of his poem *Separated Love*.

It reads:

*Outside,
It rained fine
In the garden
The sunny light fell.
"My heart, feeling
Heavy drops
And tears, is turned
Around and over..."
"On that homeward
way*

*Has it wet
Your hair,
Has it wet
Your eyes?*

The poem was selected as one of 12 to form the Victorian Ministry for the Arts Poetry on Billboards program.

The work will be displayed on billboards all

By TOM PRIOR

over Victoria, along with Jas H-Duke's *Poets are not good lovers*, Doris Brett's *In the shower* and Lesbia Harford's *The Invisible People*.

Mr Le, 43, a South Vietnamese who arrived here in 1984 and was naturalised in 1986, has a wife and two sons in Vietnam.

He is trying to bring them to Australia and has held 15 exhibitions of his eerily moving paintings of a Vietnam and an Australia which probably have never existed, except in his mind.

Mr Le's first book of poems in English, the curiously titled *Empty*

Arms, Surrounded by Warm Breath was launched at the Hunt Club in Footscray last night.

What does the title mean?

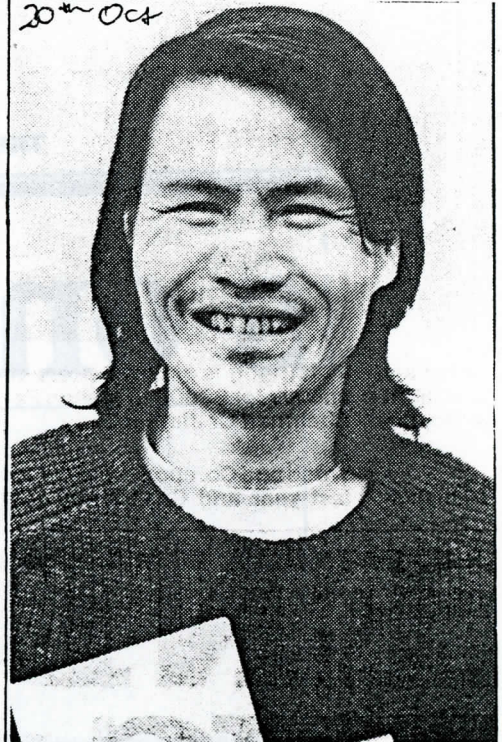
"Our arms are empty of the ones we love," said Mr Le, who spent 58 days in a boat fleeing Vietnam.

"The breath of those around us is warm, in some cases reassuring, in other cases threatening."

I tried to hold my breath, but better qualified judges told me Mr Le is a real talent, both as an artist and poet.

"Is there any difference?" asked Mr Le, when I relayed this praise to him.

Western Independent
20th Oct



Vietnamese born artist and poet Le van Tai.

Le van Tai to launch book

VIETNAMESE born painter and author Le van Tai is having a special launch at the Hunt Club in Ballarat Rd. Deer Park on Friday, October 23.

He will launch his new publication 'Empty arms, surrounded by a warm breath' in the company of guest speaker Geoff Bourke, supervisor of the adult migrant education services of the State Ministry of Education.

The 70 poems written in English are supported by a series of illustrations.

The exhibition, sponsored by Melbourne's Living Museum of the West, will be open Friday October 23 to Thursday November 5, from 9am-5pm.

Inquiries: 689 7293.

is on the cards



● Watch the birdie: environmental consultant Brett Lane photographs migratory shorebirds at Werribee, Victoria. The birds fly thousands of kilometres from Asia to Australia, and have long fascinated Mr Lane, who recently published *Shorebirds in Australia* which documents their amazing journey. Picture by GLENN GIBSON

